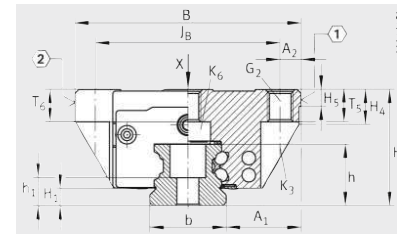
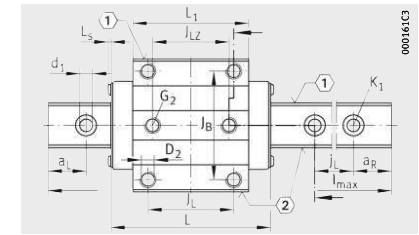


Four-row linear recirculating ball bearing and guideway assemblies

Full complement
Standard, L, N and NL carriages



KUVE...-B, KUVE...-B-L, KUVE...-B-N, KUVE...-B-NL



KUVE...-B, KUVE...-B-L, KUVE...-B-N, KUVE...-B-NL
View X rotated 90°

Dimension table - Dimensions in mm																
Designation	Dimensions				Mounting dimensions											
	$l_{max}^{2)}$	H	B	L	A_1	J_B	b	A_2	L_1	L_3	J_L	J_{L2}	J_L	$a_L, a_R^{3)}$		
															min.	max.
KUVE15-B	2880	24	47	61,2	16	38	15	4,5	39,8	1,3	30	26	60	20	53	
KUVE20-B	5880	30	63	71,4	21,5	53	20	5	50,4	1,3	40	35	60	20	53	
KUVE20-B-L				88,9					67,9							
KUVE20-B-N		71,4	50,4													
KUVE20-B-NL		88,9	67,9													
KUVE25-B	5880	36	70	83,3	23,5	57	23	6,5	60,7	1,65	45	40	60	20	53	
KUVE25-B-L				109,1					86,5							
KUVE25-B-N		83,3	60,7													
KUVE25-B-NL		109,1	86,5													
KUVE30-B	5860	42	90	99	31	72	28	9	72	1,65	52	44	80	20	71	
KUVE30-B-L				127					100							
KUVE30-B-N		99	72													
KUVE30-B-NL		127	100													
KUVE35-B	5860	48	100	112	33	82	34	9	80	1,65	62	52	80	20	71	
KUVE35-B-L				145					113							
KUVE35-B-N		112	80													
KUVE35-B-NL		145	113													
KUVE45-B	5835	60	120	140,6	37,5	100	45	10	102,5	2,2	80	60	105	20	94	
KUVE45-B-L				172,7					134,6							
KUVE45-B-N		140,6	102,5													
KUVE45-B-NL		172,7	134,6													
KUVE55-B	5820	70	140	173,6	43,5	116	53	12	132	2,2	95	70	120	20	107	
KUVE55-B-L				211,6					170							

For further table values, see page 314 and page 315.

① Locating face. ② Marking.

¹⁾ The stated torques represent maximum values for the secure transmission of forces in vibration-free, quasistatic applications ($S_0 = 1$). We recommend that the tightening torques for the screw connection of the adjacent construction should be determined at the customer under the conditions specific to the application and operation, observing the information in VDI Guideline 2230 Part 1 (2015) and the information in this description, see page 69 and page 26.

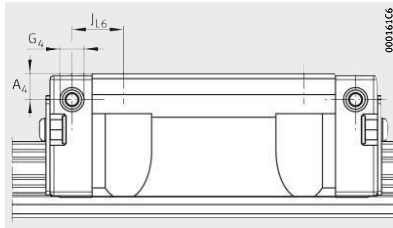
²⁾ Maximum length of single-piece guideways.
Permissible number of guideway segments, see page 309.

³⁾ a_L and a_R are dependent on the guideway length.

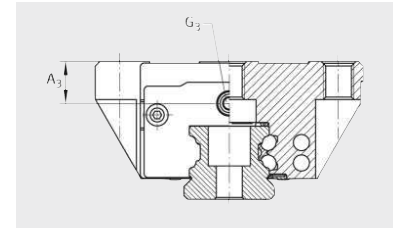
														Fixing screws ¹⁾							
H ₁	H ₄	H ₅	T ₅	T ₆	h	h ₁	DIN ISO 4762-12.9				DIN 7984-8.8				d ₁	D ₂					
							G ₂		K ₁		K ₃		K ₆				K ₆		d ₁	D ₂	
							M _A	Nm	M _A	Nm	M _A	Nm	M _A	Nm			M _A	Nm			
4,3	7,6	4,75	7	5,8	15	7,6	M5	5,8	M4	5	M4	5	-	M4	2	4,6	4,5				
4,5	11	5,25	10	7,5	17	8,6	M6	10	M5	10	M5	10	M5	10	-	-	5,8	5,5			
	8,6		8	6							M5	10	-	-	M5	4					
5,1	10,9	5,25	10	10	18,7	8,2	M8	24	M6	17	M6	17	M6	17	-	-	6,8	6,7			
	9,3		8	-							-	M6	8								
5,9	13,8	6,25	12	11,5	23,5	11	M10	41	M8	41	M8	41	M8	41	-	-	9	8,6			
	9,8		9	-							-	M8	12								
6,7	14,3	6,75	13	12,3	27	14,5	M10	41	M8	41	M8	41	M8	41	-	-	9	8,6			
	10,3		8,3	-							-	M8	12								
9,7	19,9	9,25	15	15	34,2	15,7	M12	83	M12	140	M10	83	M10	83	-	-	13,4	10,6			
	17,2		11	-							-	M10	35								
13,5	22,7	11,25	21	18	41,5	19	M14	140	M14	220	M12	140	M12	140	-	-	15,4	12,5			

Four-row linear recirculating ball bearing and guideway assemblies

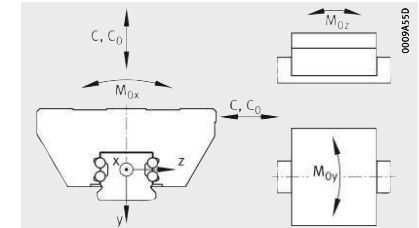
Full complement
Standard, L, N and NL carriages



Lubrication connector on lateral face



Lubrication connector on end face



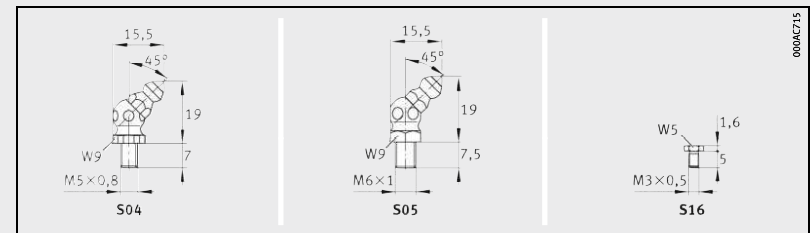
Load directions

Dimension table (continued) · Dimensions in mm

Designation	Carriage		Guideway		Lubrication connectors		
	Designation	Mass m ≈ kg	Designation	Mass m ≈ kg/m	A ₃	G ₃	2)
KUVE15-B	KWVE15-B	0,2	TKVD15-B ³⁾	1,44	4,3	M3	5,5
KUVE20-B	KWVE20-B	0,44	TKVD20	2,2	7,7	M5	7
KUVE20-B-L	KWVE20-B-L	0,59					
KUVE20-B-N	KWVE20-B-N	0,37					
KUVE20-B-NL	KWVE20-B-NL	0,51					
KUVE25-B	KWVE25-B	0,68					
KUVE25-B-L	KWVE25-B-L	1	TKVD25	2,7	11	M6	7
KUVE25-B-N	KWVE25-B-N	0,56					
KUVE25-B-NL	KWVE25-B-NL	0,82					
KUVE30-B	KWVE30-B	1,2	TKVD30	4,3	11,5	M6	7
KUVE30-B-L	KWVE30-B-L	1,7					
KUVE30-B-N	KWVE30-B-N	1					
KUVE30-B-NL	KWVE30-B-NL	1,5					
KUVE35-B	KWVE35-B	1,75	TKVD35	5,7	12,3	M6	7
KUVE35-B-L	KWVE35-B-L	2,52					
KUVE35-B-N	KWVE35-B-N	1,56					
KUVE35-B-NL	KWVE35-B-NL	2,23					
KUVE45-B	KWVE45-B	3,3					
KUVE45-B-L	KWVE45-B-L	4,3	TKVD45	9,2	16,5	M6	7
KUVE45-B-N	KWVE45-B-N	2,72					
KUVE45-B-NL	KWVE45-B-NL	3,38					
KUVE55-B	KWVE55-B	5,5					
KUVE55-B-L	KWVE55-B-L	6,6	TKVD55-B	14	15	M6	7

- 1) Calculation of basic load ratings in accordance with DIN ISO 14728-1. Based on practical experience, it may be possible to increase the basic dynamic load rating. The basic load rating can only be transmitted fully if the whole thread length is used and the adjacent construction is dimensioned appropriately.
- 2) Maximum permissible screw depth for lubrication connectors.
- 3) The new carriages cannot be used on the previous guideways TKVD15 or TKVD15-U.
- 4) Lubrication connectors are included loose:
 - S04 with KUVE20-B
 - S05 with KUVE25-B to KUVE55-B
 - S16 with KUVE15-B.

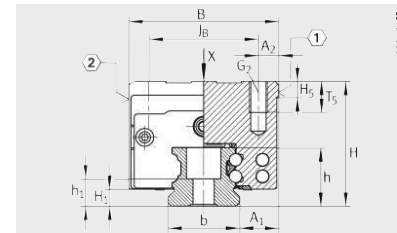
A ₄	G ₄	JL ₆	Load carrying capacity					
			Basic load ratings ¹⁾		Moment ratings			
			dyn. C N	stat. C ₀ N	M _{0x} Nm	M _{0y} Nm	M _{0z} Nm	
3,2	M3	5,5	9,1	7 200	14 500	150	100	100
4,6	M5	5,5	9,4	13 100	27 000	332	240	240
			18,9	16 200	36 500	452	430	430
3,3	M3	5,5	9,4	13 100	27 000	332	240	240
			18,9	16 200	36 500	452	430	430
6,5	M6	7	12,85	17 900	37 000	510	395	395
			25,75	23 400	54 000	745	825	825
4	M3	6	12,05	17 900	37 000	510	395	395
			24,95	23 400	54 000	745	825	825
7	M6	7	15,5	27 500	55 000	970	700	700
			29,5	34 500	74 000	1 310	1 240	1 240
			15,1	27 500	55 000	970	700	700
4,95	M5	7	29,1	34 500	74 000	1 310	1 240	1 240
			16	38 000	72 000	1 465	1 020	1 020
11	M6	7	32,5	47 500	100 000	2 625	1 890	1 890
			16	38 000	72 000	1 465	1 020	1 020
7	M6	7	32,5	47 500	100 000	2 625	1 890	1 890
			19,25	69 000	141 000	3 610	2 485	2 485
16,5	M6	7	35,3	82 000	181 000	4 635	4 000	4 000
			19,25	69 000	141 000	3 610	2 485	2 485
			35,5	82 000	181 000	4 635	4 000	4 000
8,5	M6	7	30,5	104 000	213 000	5 600	2 730	2 730
			49,5	127 000	285 000	7 500	4 725	4 800



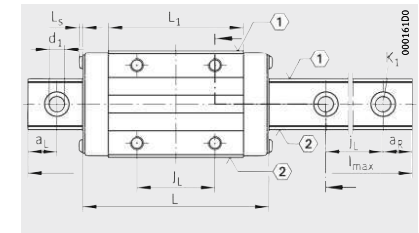
Lubrication connectors⁴⁾

Four-row linear recirculating ball bearing and guideway assemblies

Full complement
H, S and SN carriages



KUVE...-B-H, KUVE...-B-S, KUVE...-B-SN



KUVE...-B-H, KUVE...-B-S, KUVE...-B-SN
View X rotated 90°

Dimension table - Dimensions in mm

Designation	Dimensions				Mounting dimensions						
	$l_{max}^{2)}$	H	B	L	A_1	J_B	b	A_2	L_1	L_s	J_L
KUVE15-B-H	2 880	28	34	61,2	9,5	26	15	4	39,8	1,3	26
KUVE15-B-S		24									
KUVE20-B-H ⁴⁾	5 880	30	44	71,4	12	32	20	6	50,4	1,3	36
KUVE20-B-S		27									
KUVE25-B-H	5 880	40	48	83,3	12,5	35	23	6,5	60,7	1,65	35
KUVE25-B-S		36									
KUVE25-B-SN	5 860	31	60	99	16	40	28	10	72	1,65	40
KUVE30-B-H		45									
KUVE30-B-S	5 860	42	70	112	18	50	34	10	80	1,65	50
KUVE30-B-SN		38									
KUVE35-B-H	5 860	55	86	140,6	20,5	60	45	13	102,5	2,2	60
KUVE35-B-S		48									
KUVE35-B-SN	5 835	44	100	173,6	23,5	75	53	12,5	132	2,2	75
KUVE45-B-H		70									
KUVE45-B-S	5 835	60	86	140,6	20,5	60	45	13	102,5	2,2	60
KUVE45-B-SN		52									
KUVE55-B-S	5 820	70	100	173,6	23,5	75	53	12,5	132	2,2	75

For further table values, see page 318 and page 319.

① Locating face. ② Marking.

1) The stated torques represent maximum values for the secure transmission of forces in vibration-free, quasistatic applications ($S_0 = 1$). We recommend that the tightening torques for the screw connection of the adjacent construction should be determined at the customer under the conditions specific to the application and operation, observing the information in VDI Guideline 2230 Part 1 (2015) and the information in this description, see page 69 and page 26.

2) Maximum length of single-piece guideways.
Permissible number of guideway segments, see page 309.

3) a_L and a_R are dependent on the guideway length.

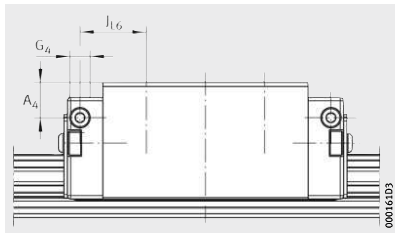
4) KUVE20-B-H and KUVE20-B-S are 100% identical in dimensions and performance.
If a KUVE20-B-H is ordered, the order confirmation will contain the designation KUVE20-B-S.

J_L	$a_L, a_R^{3)}$		H_1	H_5	T_5	h	h_1	Fixing screws ¹⁾				
								DIN ISO 4762-12.9		d_1		
								M_A	K_1		M_A	
60	20	53	4,3	4,75	6	15	7,6	M4	5	M4	5	4,6
60	20	53	4,5	5,25	7,5	17	8,6	M5	10	M5	10	5,8
60	20	53	5,1	5,25	10	18,7	8,2	M6	17	M6	17	6,8
					7,5							
80	20	71	5,9	6,25	13,5	23,5	11	M8	41	M8	41	9
					11							
80	20	71	6,7	6,75	13,5	27	14,5	M8	41	M8	41	9
105	20	94	9,7	9,25	17	34,2	15,7	M10	83	M12	140	13,4
					16,5							
120	20	107	13,5	11,25	15	41,5	19	M12	140	M14	220	15,4

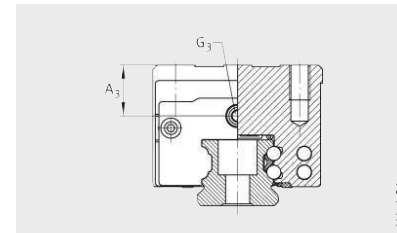


Four-row linear recirculating ball bearing and guideway assemblies

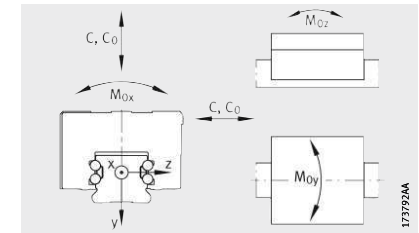
Full complement
H, S and SN carriages



Lubrication connector on lateral face



Lubrication connector on end face



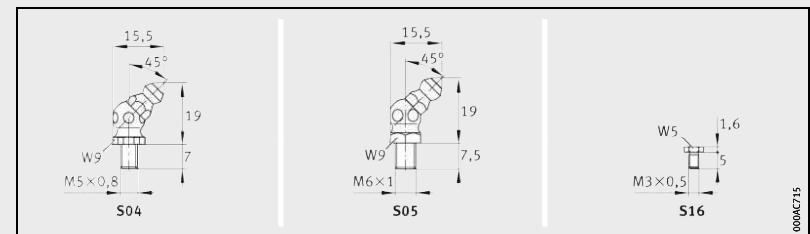
Load directions

Dimension table (continued) · Dimensions in mm

Designation	Carriage		Guideway		Lubrication connectors		
	Designation	Mass m ≈ kg	Designation	Mass m ≈ kg/m	A ₃	G ₃	2)
KUVE15-B-H	KWVE15-B-H	0,2	TKVD15-B ³⁾	1,44	8,3	M3	5,5
KUVE15-B-S	KWVE15-B-S	0,16			4,3		
KUVE20-B-H ⁴⁾	KWVE20-B-H	0,34	TKVD20	2,2	7,7	M5	7
KUVE20-B-S ⁴⁾	KWVE20-B-S	0,34			7,7		
KUVE20-B-SN	KWVE20-B-SN	0,29			4,7		
KUVE25-B-H	KWVE25-B-H	0,65	TKVD25	2,7	15	M6	7
KUVE25-B-S	KWVE25-B-S	0,56			11		
KUVE25-B-SN	KWVE25-B-SN	0,45			6		
KUVE30-B-H	KWVE30-B-H	1,04	TKVD30	4,3	14,5	M6	7
KUVE30-B-S	KWVE30-B-S	0,94			11,5		
KUVE30-B-SN	KWVE30-B-SN	0,8			7,5		
KUVE35-B-H	KWVE35-B-H	1,71	TKVD35	5,7	19,3	M6	7
KUVE35-B-S	KWVE35-B-S	1,3			12,3		
KUVE35-B-SN	KWVE35-B-SN	1,24			8,3		
KUVE45-B-H	KWVE45-B-H	3,36	TKVD45	9,2	26,5	M6	7
KUVE45-B-S	KWVE45-B-S	2,67			16,5		
KUVE45-B-SN	KWVE45-B-SN	2,12			8,5		
KUVE55-B-S	KWVE55-B-S	4,35	TKVD55-B	14	15	M6	7

- 1) Calculation of basic load ratings in accordance with DIN ISO 14728-1. Based on practical experience, it may be possible to increase the basic dynamic load rating. The basic load rating can only be transmitted fully if the whole thread length is used and the adjacent construction is dimensioned appropriately.
- 2) Maximum permissible screw depth for lubrication connectors.
- 3) The new carriages cannot be used on the previous guideways TKVD15 or TKVD15-U.
- 4) KUVE20-B-H and KUVE20-B-S are 100% identical in dimensions and performance. If a KUVE20-B-H is ordered, the order confirmation will contain the designation KUVE20-B-S.
- 5) Lubrication connectors are included loose:
 - S04 with KUVE20-B
 - S05 with KUVE25-B to KUVE55-B
 - S16 with KUVE15-B.

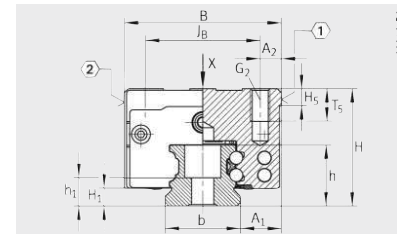
A ₄	G ₄		J _{1,6}	Load carrying capacity				
		2)		Basic load ratings ¹⁾		Moment ratings		
				dyn. C N	stat. C ₀ N	M _{0x} Nm	M _{0y} Nm	M _{0z} Nm
7,2	M3	5,5	11,1	7 200	14 500	150	100	100
3,2								
4,6	M5	5,5	11,4	13 100	27 000	332	240	240
4,6								
3,3	M3							
10,5	M6	7	17,9	17 900	37 000	510	395	395
6,5								
4	M3	6						
10	M6	7	21,5	27 500	55 000	970	700	700
7								
4,95	M5							
18	M6	7	22	38 000	72 000	1 465	1 020	1 020
11								
7								
26,5	M6	7	29,3	69 000	141 000	3 610	2 485	2 485
16,5								
8,5								
15	M6	7	40,5	104 000	213 000	5 600	2 730	2 730



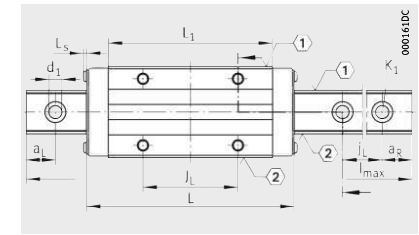
Lubrication connectors⁵⁾

Four-row linear recirculating ball bearing and guideway assemblies

Full complement
HL, SL and SNL carriages



KUVE...-B-HL, KUVE...-B-SL, KUVE...-B-SNL



KUVE...-B-HL, KUVE...-B-SL, KUVE...-B-SNL
View X rotated 90°

Dimension table - Dimensions in mm												
Designation	Dimensions				Mounting dimensions							
	$l_{max}^{2)}$	H	B	L	A_1	j_B	b	A_2	L_1	L_s	j_L	
KUVE20-B-SL	5 880	30	44	88,9	12	32	20	6	67,9	1,3	50	
KUVE20-B-SNL		27										
KUVE25-B-HL	5 880	40	48	109,1	12,5	35	23	6,5	86,5	1,65	50	
KUVE25-B-SL		36										
KUVE25-B-SNL		31										
KUVE30-B-HL	5 860	45	60	127	16	40	28	10	100	1,65	60	
KUVE30-B-SL		42										
KUVE30-B-SNL		38										
KUVE35-B-HL	5 860	55	70	145	18	50	34	10	113	1,65	72	
KUVE35-B-SL		48										
KUVE35-B-SNL		44										
KUVE45-B-HL		70										
KUVE45-B-SL	5 835	60	86	172,7	20,5	60	45	13	134,6	2,2	80	
KUVE45-B-SNL		52										
KUVE55-B-SL	5 820	70	100	211,6	23,5	75	53	12,5	170	2,2	95	

For further table values, see page 322 and page 323.

① Locating face. ② Marking.

¹⁾ The stated torques represent maximum values for the secure transmission of forces in vibration-free, quasistatic applications ($S_0 = 1$). We recommend that the tightening torques for the screw connection of the adjacent construction should be determined at the customer under the conditions specific to the application and operation, observing the information in VDI Guideline 2230 Part 1 (2015) and the information in this description, see page 69 and page 26.

²⁾ Maximum length of single-piece guideways.
Permissible number of guideway segments, see page 309.

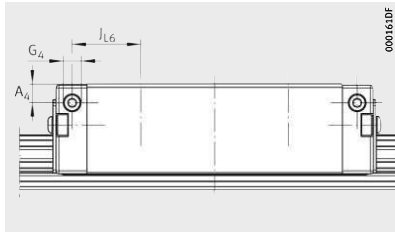
³⁾ a_l and a_r are dependent on the guideway length.

j_L	$a_l, a_r^{3)}$		H_1	H_5	T_5	h	h_1	Fixing screws ¹⁾				
								G_2		K_1		d_1
								DIN ISO 4762-12.9		M_A	M_A	
	min.	max.						Nm	Nm			
60	20	53	4,5	5,25	7,5	17	8,6	M5	10	M5	10	5,8
60	20	53	5,1	5,25	10	18,7	8,2	M6	17	M6	17	6,8
					7,5							
80	20	71	5,9	6,25	13,5	23,5	11	M8	41	M8	41	9
					11							
80	20	71	6,7	6,75	13,5	27	14,5	M8	41	M8	41	9
105	20	94	9,7	9,25	17	34,2	15,7	M10	83	M12	140	13,4
					16,5							
120	20	107	13,5	11,25	15	41,5	19	M12	140	M14	220	15,4

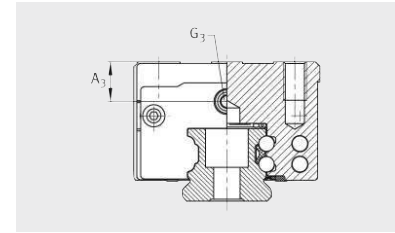


Four-row linear recirculating ball bearing and guideway assemblies

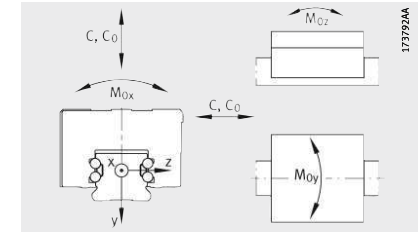
Full complement
HL, SL and SNL carriages



Lubrication connector on lateral face



Lubrication connector on end face



Load directions

Dimension table (continued) · Dimensions in mm							
Designation	Carriage		Guideway		Lubrication connectors		
	Designation	Mass m ≈ kg	Designation	Mass m ≈ kg/m	A ₃	G ₃ 2)	
KUVE20-B-SL	KWVE20-B-SL	0,46	TKVD20	2,2	7,7	M5	7
KUVE20-B-SNL	KWVE20-B-SNL	0,38			4,7		
KUVE25-B-HL	KWVE25-B-HL	1	TKVD25	2,7	15	M6	7
KUVE25-B-SL	KWVE25-B-SL	1			11		
KUVE25-B-SNL	KWVE25-B-SNL	0,62			6		
KUVE30-B-HL	KWVE30-B-HL	1,43	TKVD30	4,3	14,5	M6	7
KUVE30-B-SL	KWVE30-B-SL	1,7			11,5		
KUVE30-B-SNL	KWVE30-B-SNL	1,1			7,5		
KUVE35-B-HL	KWVE35-B-HL	2,4	TKVD35	5,7	19,3	M6	7
KUVE35-B-SL	KWVE35-B-SL	1,81			12,3		
KUVE35-B-SNL	KWVE35-B-SNL	1,72			8,3		
KUVE45-B-HL	KWVE45-B-HL	4,27	TKVD45	9,2	26,5	M6	7
KUVE45-B-SL	KWVE45-B-SL	3,38			16,5		
KUVE45-B-SNL	KWVE45-B-SNL	2,68			8,5		
KUVE55-B-SL	KWVE55-B-SL	6,3	TKVD55-B	14	15	M6	7

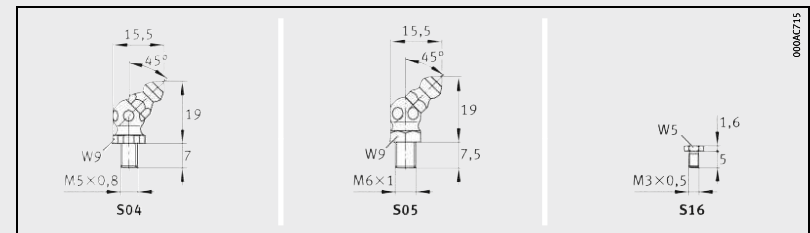
1) Calculation of basic load ratings in accordance with DIN ISO 14728-1.
Based on practical experience, it may be possible to increase the basic dynamic load rating.
The basic load rating can only be transmitted fully if the whole thread length is used
and the adjacent construction is dimensioned appropriately.

2) Maximum permissible screw depth for lubrication connectors.

3) Lubrication connectors are included loose:

- S04 with KUVE20-B
- S05 with KUVE25-B to KUVE55-B
- S16 with KUVE15-B.

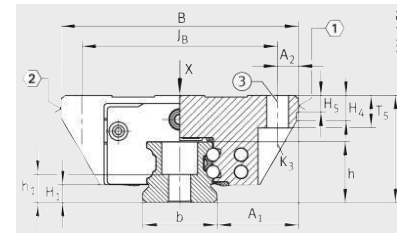
A ₄	G ₄	J ₁₆	Load carrying capacity					
			Basic load ratings ¹⁾		Moment ratings			
			dyn. C N	stat. C ₀ N	M _{0x} Nm	M _{0y} Nm	M _{0z} Nm	
4,6	M5	5,5	13,2	16 200	36 500	452	430	430
3,3	M3							
10,5	M6	7	23,3	23 400	54 000	745	825	825
6,5	M3							
4	M3	6	22,5	34 500	74 000	1 310	1 240	1 240
10	M6	7	25,5					
7								
4,95	M5	7	25,1	47 500	100 000	2 625	1 890	1 890
18	M6	7	27,5					
11								
7	M6	7	35,3	82 000	181 000	4 635	4 000	4 000
26,5								
16,5								
8,5	M6	7	49,5	127 000	285 000	7 500	4 725	4 800
15								



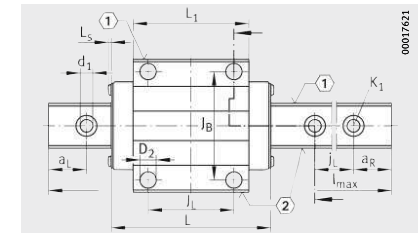
Lubrication connectors³⁾

Four-row linear recirculating ball bearing and guideway assemblies

Full complement
E carriages
Without screw threads



KUVE...-B-E



KUVE...-B-E
View X rotated 90°

Dimension table - Dimensions in mm

Designation	Dimensions				Mounting dimensions						
	$l_{max}^{2)}$	H	B	L	A_1	J_B	b <small>-0,005 -0,03</small>	A_2	L_1	L_5	J_L
KUVE15-B-E	2 880	24	52	61,2	18,5	41	15	5,5	39,8	1,3	26
KUVE20-B-E	5 880	28	59	71,4	19,5	49	20	5	50,4	1,3	32
KUVE25-B-E	5 880	33	73	83,3	25	60	23	6,5	60,7	1,65	35
KUVE30-B-E	5 860	42	90	99	31	72	28	9	72	1,65	40
KUVE35-B-E	5 860	48	100	112	33	82	34	9	80	1,65	50

For further table values, see page 326 and page 327.

① Locating face. ② Marking. ③ No thread.

¹⁾ The stated torques represent maximum values for the secure transmission of forces in vibration-free, quasistatic applications ($S_0 = 1$). We recommend that the tightening torques for the screw connection of the adjacent construction should be determined at the customer under the conditions specific to the application and operation, observing the information in VDI Guideline 2230 Part 1 (2015) and the information in this description, see page 69 and page 26.

²⁾ Maximum length of single-piece guideways.
Permissible number of guideway segments, see page 309.

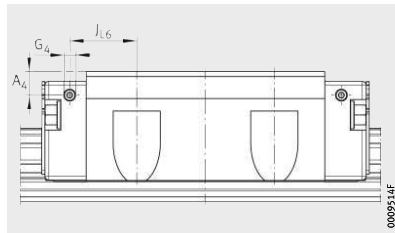
³⁾ a_L and a_R are dependent on the guideway length.

J_L	$a_L, a_R^{3)}$		H_1	H_4	H_5	T_5	h	h_1	Fixing screws ¹⁾					
									DIN ISO 4762-12.9		d_1	D_2		
									K_1	M_A Nm			K_3	M_A Nm
60	20	53	4,3	6,1	4,75	7	15	8,15	M4	5	M4	5	4,6	4,5
60	20	53	4,5	11,2	5,25	9	17	9,1	M5	10	M5	10	5,8	5,5
60	20	53	5,1	7,85	5,25	10	18,7	8,7	M6	17	M6	17	6,8	6,7
80	20	71	5,9	13,8	6,25	12	23,5	11,5	M8	41	M8	41	9	8,6
80	20	71	6,7	14,3	6,75	13	27	15	M8	41	M8	41	9	8,6

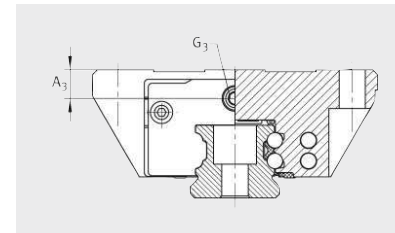


Four-row linear recirculating ball bearing and guideway assemblies

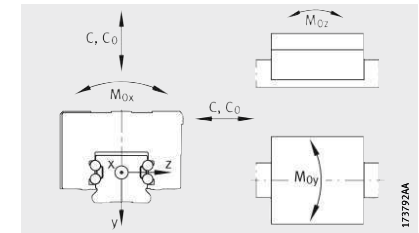
Full complement
E carriages
Without screw threads



Lubrication connector on lateral face



Lubrication connector on end face



Load directions

Dimension table (continued) - Dimensions in mm

Designation	Carriage		Guideway		Lubrication connectors		
	Designation	Mass m ≈ kg	Designation	Mass m ≈ kg/m	A ₃	G ₃	2)
KUVE15-B-E	KWVE15-B-E	0,2	TKVD15-B	1,44	4,3	M3	5,5
KUVE20-B-E	KWVE20-B-E	0,36	TKVD20	2,2	6	M5	7
KUVE25-B-E	KWVE25-B-E	0,68	TKVD25	2,7	8	M6	7
KUVE30-B-E	KWVE30-B-E	1,2	TKVD30	4,3	11,5	M6	7
KUVE35-B-E	KWVE35-B-E	1,75	TKVD35	5,7	12,3	M6	7

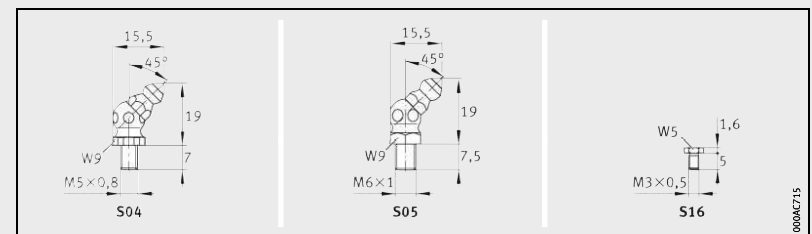
1) Calculation of basic load ratings in accordance with DIN ISO 14728-1.
Based on practical experience, it may be possible to increase the basic dynamic load rating.
The basic load rating can only be transmitted fully if the whole thread length is used
and the adjacent construction is dimensioned appropriately.

2) Maximum permissible screw depth for lubrication connectors.

3) Lubrication connectors are included loose:

- S04 with KUVE20-B
- S05 with KUVE25-B to KUVE55-B
- S16 with KUVE15-B.

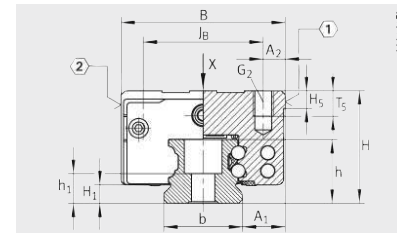
A ₄	G ₄	2)	J _{L6}	Load carrying capacity				
				Basic load ratings ¹⁾		Moment ratings		
				dyn. C N	stat. C ₀ N	M _{0x} Nm	M _{0y} Nm	M _{0z} Nm
3,2	M3	5,5	11,1	7 200	14 500	150	100	100
4,3	M3	5,5	13,4	13 100	27 000	332	240	240
6	M3	7	17,05	17 900	37 000	510	395	395
7	M6	7	21,1	27 500	55 000	970	700	700
11	M6	7	22	38 000	72 500	1 465	1 020	1 020



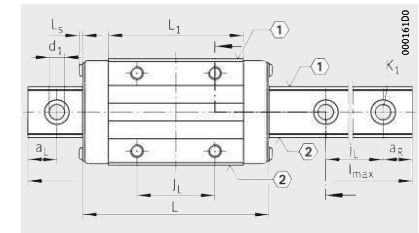
Lubrication connectors³⁾

Four-row linear recirculating ball bearing and guideway assemblies

Full complement ES carriages



KUVE...-B-ES



KUVE...-B-ES
View X rotated 90°

Dimension table - Dimensions in mm

Designation ¹⁾	Dimensions				Mounting dimensions						
	l_{max} ³⁾	H	B	L	A ₁	J _B	b	A ₂	L ₁	L _S	
KUVE15-B-ES	2 880	24	34	61,2	9,5	26	15 ^{-0,06 -0,03}	4	39,8	1,3	
KUVE20-B-ES	5 880	28	42	71,4	11	32	20	5	50,4	1,3	
KUVE25-B-ES	5 880	33	48	83,3	12,5	35	23	6,5	60,7	1,65	
KUVE30-B-ES	5 860	42	60	99	16	40	28	10	72	1,65	
KUVE35-B-ES	5 860	48	70	112	18	50	34	10	80	1,65	

For further table values, see page 330 and page 331.

① Locating face. ② Marking.

¹⁾ KUVE15-B-ES and KUVE15-B-S, KUVE30-B-ES and KUVE30-B-S as well as KUVE35-B-ES and KUVE35-B-S are in each case 100% identical in dimensions and performance. If a KUVE15-B-ES, KUVE30-B-ES or KUVE35-B-ES is ordered, the confirmation of the quotation will contain the designation KUVE15-B-S, KUVE30-B-S or KUVE35-B-S.

²⁾ The stated torques represent maximum values for the secure transmission of forces in vibration-free, quasistatic applications ($S_0 = 1$). We recommend that the tightening torques for the screw connection of the adjacent construction should be determined at the customer under the conditions specific to the application and operation, observing the information in VDI Guideline 2230 Part 1 (2015) and the information in this description, see page 69 and page 26.

³⁾ Maximum length of single-piece guideways. Permissible number of guideway segments, see page 309.

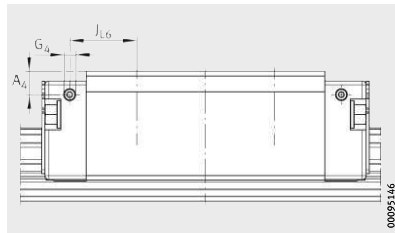
⁴⁾ a_L and a_R are dependent on the guideway length.

J _L	J _L	a _L , a _R ⁴⁾		H ₁	H ₅	T ₅	h	h ₁	Fixing screws ²⁾				
		min.	max.						G ₂		K ₁		d ₁
									DIN ISO 4762-12.9		M _A	M _A	
26	60	20	53	4,3	4,75	6	15	7,6	M4	5	M4	5	4,6
32	60	20	53	4,5	5,25	7,5	17	8,6	M5	10	M5	10	5,8
35	60	20	53	5,2	5,25	10	18,7	8,2	M6	17	M6	17	6,8
40	80	20	71	5,9	6,25	13,5	23,5	11	M8	41	M8	41	9
50	80	20	71	6,7	6,75	13,5	27	14,5	M8	41	M8	41	9

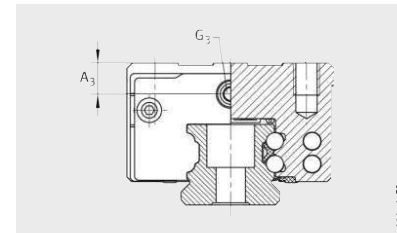


Four-row linear recirculating ball bearing and guideway assemblies

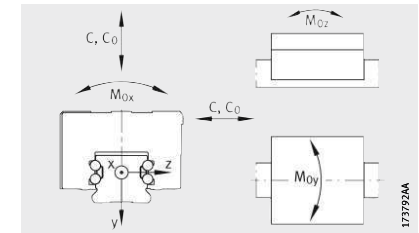
Full complement ES carriages



Lubrication connector on lateral face



Lubrication connector on end face



Load directions

Dimension table (continued) · Dimensions in mm

Designation	Carriage		Guideway		Lubrication connectors		
	Designation	Mass m ≈ kg	Designation	Mass m ≈ kg/m	A ₃	G ₃	2)
KUVE15-B-ES	KWVE15-B-ES	0,16	TKVD15-B ³⁾	1,44	4,3	M3	5,5
KUVE20-B-ES	KWVE20-B-ES	0,31	TKVD20	2,2	8	M5	7
KUVE25-B-ES	KWVE25-B-ES	0,56	TKVD25	2,7	11	M6	7
KUVE30-B-ES	KWVE30-B-ES	0,94	TKVD30	4,3	11,5	M6	7
KUVE35-B-ES	KWVE35-B-ES	1,3	TKVD35	5,7	12,3	M6	7

1) Calculation of basic load ratings in accordance with DIN ISO 14728-1.
Based on practical experience, it may be possible to increase the basic dynamic load rating.
The basic load rating can only be transmitted fully if the whole thread length is used and the adjacent construction is dimensioned appropriately.

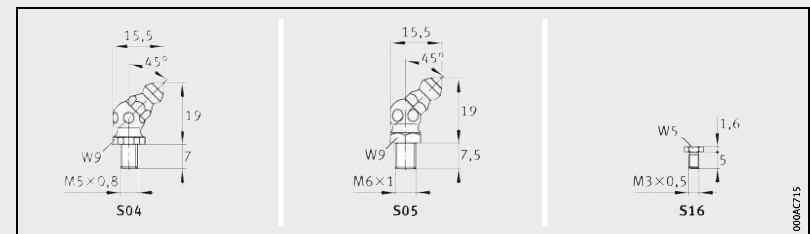
2) Maximum permissible screw depth for lubrication connectors.

3) The new carriages cannot be used on the existing guideways TKVD15 or TKVD15-U.

4) Lubrication connectors are included loose:

- S04 with KUVE20-B
- S05 with KUVE25-B to KUVE55-B
- S16 with KUVE15-B.

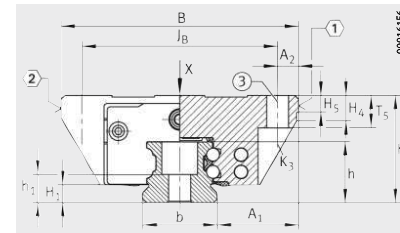
A ₄	G ₄	J ₁₆	Load carrying capacity					
			Basic load ratings ¹⁾		Moment ratings			
			dyn. C N	stat. C ₀ N	M _{0x} Nm	M _{0y} Nm	M _{0z} Nm	
3,2	M3	5,5	9,1	7 200	14 500	150	100	100
4,6	M3	5,5	9,4	13 100	27 000	332	240	240
6,5	M3	7	12,85	17 900	37 000	510	395	395
7	M6	7	15,5	27 500	55 000	970	700	700
11	M6	7	16	38 000	72 500	1 465	1 020	1 020



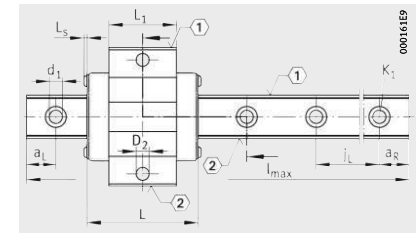
Lubrication connectors⁴⁾

Four-row linear recirculating ball bearing and guideway assemblies

Full complement
EC carriages
Without screw threads



KUVE...-B-EC



KUVE...-B-EC
View X rotated 90°

Dimension table - Dimensions in mm											
Designation	Dimensions				Mounting dimensions						
	$l_{max}^{2)}$	H	B	L	A_1	J_B	b <small>-0,005 -0,03</small>	A_2	L_1	L_3	
KUVE15-B-EC	2 880	24	52	44,5	18,5	41	15	5,5	23,1	1,3	
KUVE20-B-EC	5 880	28	59	50,4	19,5	49	20	5	29,4	1,65	
KUVE25-B-EC	5 880	33	73	58,2	25	60	23	6,5	35,6	1,65	
KUVE30-B-EC	5 860	42	90	69	31	72	28	9	42	1,65	
KUVE35-B-EC	5 860	48	100	76,2	33	82	34	9	44,2	1,65	
KUVE45-B-EC	5 835	60	120	97,8	37,5	100	45	10	59,7	2,2	

For further table values, see page 334 and page 335.

① Locating face. ② Marking. ③ No thread.

1) The stated torques represent maximum values for the secure transmission of forces in vibration-free, quasistatic applications ($S_0 = 1$). We recommend that the tightening torques for the screw connection of the adjacent construction should be determined at the customer under the conditions specific to the application and operation, observing the information in VDI Guideline 2230 Part 1 (2015) and the information in this description, see page 69 and page 26.

2) Maximum length of single-piece guideways.
Permissible number of guideway segments, see page 309.

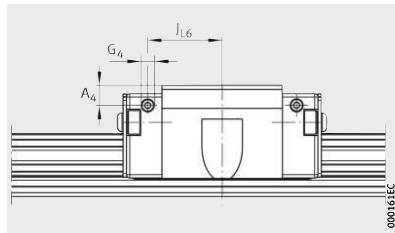
3) a_L and a_R are dependent on the guideway length.

j_L	$a_L, a_R^{3)}$	H_1	H_4	H_5	T_5	h	h_1	Fixing screws ¹⁾						
								K ₁		K ₃		d_1	D_2	
								DIN ISO 4 762-12.9						
		M_A Nm		M_A Nm										
60	20	53	4,3	6,1	4,75	7	15	7,6	M4	5	M4	5	4,6	4,5
60	20	53	4,5	11,2	5,25	9	17	8,6	M5	10	M5	10	5,8	5,5
60	20	53	5,1	7,85	5,25	10	18,7	8,2	M6	17	M6	17	6,8	6,7
80	20	71	5,9	13,8	6,25	12	23,5	11	M8	41	M8	41	9	8,6
80	20	71	6,7	14,3	6,75	13,5	27	14,5	M8	41	M8	41	9	8,6
105	20	94	9,7	19,9	9,25	15	34,2	15,7	M12	140	M10	83	13,4	10,6

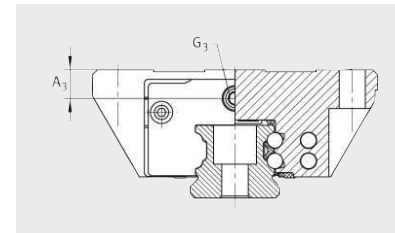


Four-row linear recirculating ball bearing and guideway assemblies

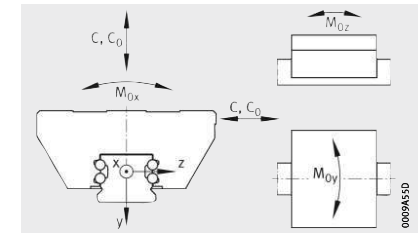
Full complement
EC carriages
Without screw threads



Lubrication connector on lateral face



Lubrication connector on end face



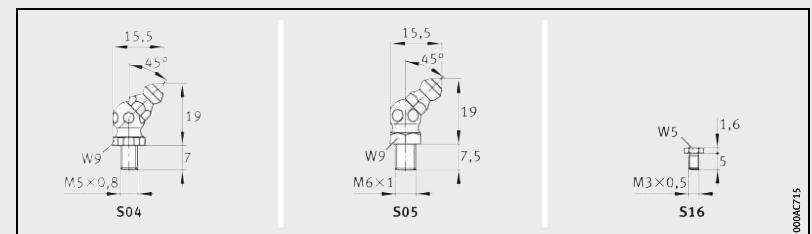
Load directions

Dimension table (continued) · Dimensions in mm

Designation	Carriage		Guideway		Lubrication connectors		
	Designation	Mass m ≈ kg	Designation	Mass m ≈ kg/m	A ₃	G ₃	2)
KUVE15-B-EC	KWVE15-B-EC	0,13	TKVD15-B ³⁾	1,44	4,3	M3	5,5
KUVE20-B-EC	KWVE20-B-EC	0,23	TKVD20	2,2	6	M5	7
KUVE25-B-EC	KWVE25-B-EC	0,4	TKVD25	2,7	8	M6	7
KUVE30-B-EC	KWVE30-B-EC	0,75	TKVD30	4,3	11,5	M6	7
KUVE35-B-EC	KWVE35-B-EC	1,04	TKVD35	5,7	12,3	M6	7
KUVE45-B-EC	KWVE45-B-EC	2,07	TKVD45	9,2	16,5	M6	7

- 1) Calculation of basic load ratings in accordance with DIN ISO 14728-1. Based on practical experience, it may be possible to increase the basic dynamic load rating. The basic load rating can only be transmitted fully if the whole thread length is used and the adjacent construction is dimensioned appropriately.
- 2) Maximum permissible screw depth for lubrication connectors.
- 3) The new carriages cannot be used on the previous guideways TKVD15 or TKVD15-U.
- 4) Lubrication connectors are included loose:
 - S04 with KUVE20-B
 - S05 with KUVE25-B to KUVE55-B
 - S16 with KUVE15-B.

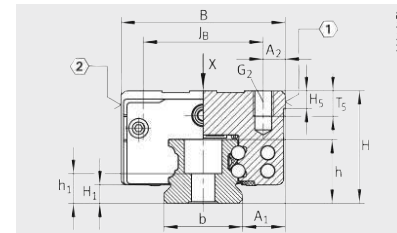
A ₄	G ₄		J _{L6}	Load carrying capacity				
		2)		Basic load ratings ¹⁾		Moment ratings		
				dyn. C N	stat. C ₀ N	M _{0x} Nm	M _{0y} Nm	M _{0z} Nm
3,2	M3	5,5	15,8	4 900	8 300	86	35	35
4,3	M3	5,5	18,9	8 900	15 400	190	85	85
6	M3	6	22	12 500	22 200	305	155	155
7	M6	7	26,5	18 700	31 500	554	248	248
11	M6	7	29,1	24 600	39 000	790	330	330
16,5	M6	7	37,9	46 500	80 000	2 060	883	883



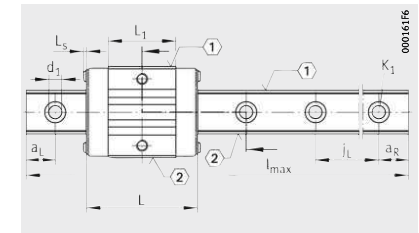
Lubrication connectors⁴⁾

Four-row linear recirculating ball bearing and guideway assemblies

Full complement ESC carriages



KUVE...-B-ESC



KUVE...-B-ESC
View X rotated 90°

Dimension table - Dimensions in mm

Designation	Dimensions				Mounting dimensions						
	$l_{max}^{2)}$	H	B	L	A_1	J_B	b	A_2	L_1	L_s	
KUVE15-B-ESC	2880	24	34	44,5	9,5	26	15 ^{-0,005 -0,03}	4	23,1	1,3	
KUVE20-B-ESC	5880	28	42	50,4	11	32	20	5	29,4	1,65	
KUVE25-B-ESC	5880	33	48	58,2	12,5	35	23	6,5	35,6	1,65	
KUVE30-B-ESC	5860	42	60	69	16	40	28	10	42	1,65	
KUVE35-B-ESC	5860	48	70	76,2	18	50	34	10	44,2	1,65	
KUVE45-B-ESC	5835	60	86	97,8	20,5	60	45	13	59,7	2,2	

For further table values, see page 338 and page 339.

① Locating face. ② Marking.

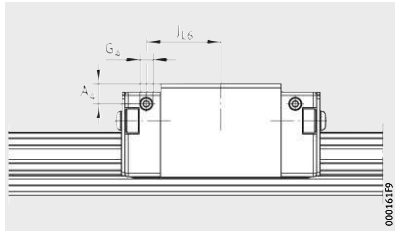
- The stated torques represent maximum values for the secure transmission of forces in vibration-free, quasistatic applications ($S_0 = 1$). We recommend that the tightening torques for the screw connection of the adjacent construction should be determined at the customer under the conditions specific to the application and operation, observing the information in VDI Guideline 2230 Part 1 (2015) and the information in this description, see page 69 and page 26.
- Maximum length of single-piece guideways.
Permissible number of guideway segments, see page 309.
- a_l and a_r are dependent on the guideway length.

j_L	$a_l, a_r^{3)}$		H_1	H_5	T_5	h	h_1	Fixing screws ¹⁾				
								DIN ISO 4762-12.9		d_1		
								M_A Nm	M_A Nm			
60	20	53	4,3	4,75	6	15	7,6	M4	5	M4	5	4,6
60	20	53	4,5	5,25	7,5	17	8,6	M5	10	M5	10	5,8
60	20	53	5,1	5,25	10	18,7	8,2	M6	17	M6	17	6,8
80	20	71	5,9	6,25	13,5	23,5	11	M8	41	M8	41	9
80	20	71	6,7	6,75	13,5	27	14,5	M8	41	M8	41	9
105	20	94	9,7	9,25	17	34,2	15,7	M10	83	M12	140	13,4

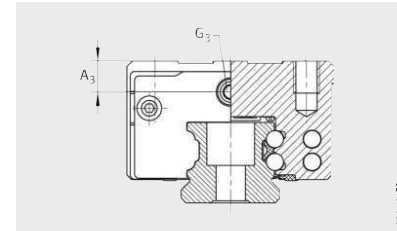


Four-row linear recirculating ball bearing and guideway assemblies

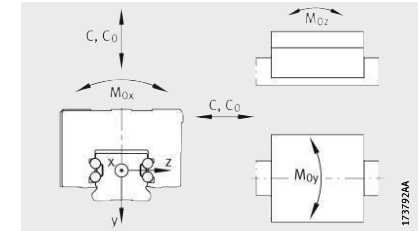
Full complement ESC carriages



Lubrication connector on lateral face



Lubrication connector on end face



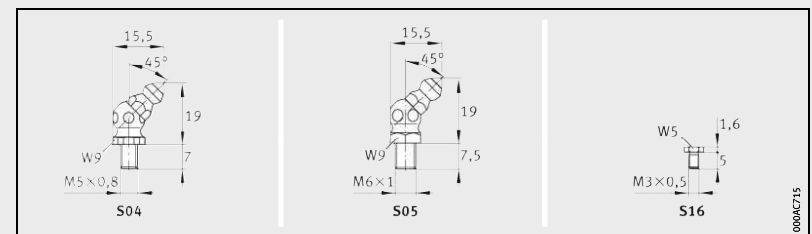
Load directions

Dimension table (continued) · Dimensions in mm

Designation	Carriage		Guideway		Lubrication connectors		
	Designation	Mass m ≈ kg	Designation	Mass m ≈ kg/m	A ₃	G ₃	2)
KUVE15-B-ESC	KWVE15-B-ESC	0,12	TKVD15-B ³⁾	1,44	4,3	M3	5,5
KUVE20-B-ESC	KWVE20-B-ESC	0,18	TKVD20	2,2	6	M5	7
KUVE25-B-ESC	KWVE25-B-ESC	0,3	TKVD25	2,7	8	M6	7
KUVE30-B-ESC	KWVE30-B-ESC	0,57	TKVD30	4,3	11,5	M6	7
KUVE35-B-ESC	KWVE35-B-ESC	1,04	TKVD35	5,7	12,3	M6	7
KUVE45-B-ESC	KWVE45-B-ESC	1,8	TKVD45	9,2	16,5	M6	7

- 1) Calculation of basic load ratings in accordance with DIN ISO 14728-1. Based on practical experience, it may be possible to increase the basic dynamic load rating. The basic load rating can only be transmitted fully if the whole thread length is used and the adjacent construction is dimensioned appropriately.
- 2) Maximum permissible screw depth for lubrication connectors.
- 3) The new carriages cannot be used on the previous guideways TKVD15 or TKVD15-U.
- 4) Lubrication connectors are included loose:
 - S04 with KUVE20-B
 - S05 with KUVE25-B to KUVE55-B
 - S16 with KUVE15-B.

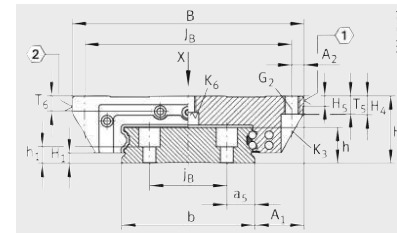
A ₄	G ₄		l _{L6}	Load carrying capacity				
		2)		Basic load ratings ¹⁾		Moment ratings		
				dyn. C N	stat. C ₀ N	M _{0x} Nm	M _{0y} Nm	M _{0z} Nm
3,2	M3	5,5	15,8	4 900	8 300	86	35	35
4,3	M3	5,5	18,9	8 900	15 400	190	85	85
6	M3	6	22	12 500	22 200	305	155	155
7	M6	7	26,5	18 700	31 500	554	248	248
11	M6	7	29,1	24 600	39 000	790	330	330
16,5	M6	7	37,9	46 500	80 000	2 060	883	883



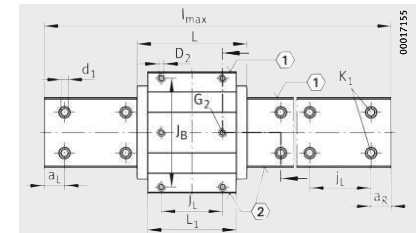
Lubrication connectors⁴⁾

Four-row linear recirculating ball bearing and guideway assemblies

Full complement
Wide guideway
W and WL carriages



KUVE...-W, KUVE...-WL



KUVE...-W, KUVE...-WL
View X rotated 90°

Dimension table - Dimensions in mm

Designation	Dimensions				Mounting dimensions										
	l _{max} ²⁾	H	B	L	A ₁	J _B	j _B	a ₅	b	A ₂	L ₁	J _L	j _L	a _L , a _R ³⁾	
														min.	max.
KUVE15-W	2890	21	68	55,6	15,5	60	22	7,5	37	4	39,8	29	50	20	44
KUVE20-W	2880	27	80	69,8	19	70	24	9	42	5	50,4	40	60	20	53
KUVE20-WL				87,3							67,9				
KUVE25-W	5860	35	120	81,7	25,5	107	40	14,5	69	6,5	60,7	45	80	20	71
KUVE25-WL				107,5							86,5	60			
KUVE30-W	5860	42	142	97,5	31	124	50	15	80	9	72	52	80	20	71
KUVE35-WL	5860	50	162	140,2	36	144	60	15	90	9	109,8	80	80	20	71

Further table values, see page 342 and page 343.

① Locating face. ② Marking.

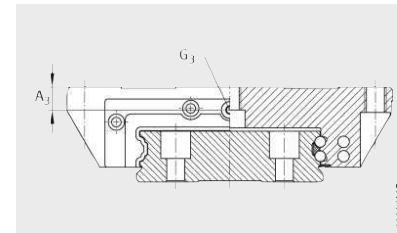
- The stated torques represent maximum values for the secure transmission of forces in vibration-free, quasistatic applications ($S_0 = 1$). We recommend that the tightening torques for the screw connection of the adjacent construction should be determined at the customer under the conditions specific to the application and operation, observing the information in VDI Guideline 2230 Part 1 (2015) and the information in this description, see page 69 and page 26.
- Maximum length of single-piece guideways.
Permissible number of guideway segments, see page 309.
- a_L and a_R are dependent on the guideway length.
- For location from above:
The maximum screw depth for the two central threaded holes is $T_6 + 2,5$ mm.

H ₁	H ₅	H ₄	T ₅	T ₆ ⁴⁾	h	h ₁	Fixing screws ¹⁾										d ₁	D ₂
							DIN ISO 4762-12.9					DIN 7984-8.8						
							G ₂	K ₁	K ₃	K ₆	K ₆	M _A Nm	M _A Nm	M _A Nm	M _A Nm	M _A Nm		
2,1	4,5	7,7	7	4,8	12,9	6	M5	5,8	M4	5	M4	5	-	-	M4	2	4,6	4,5
4,6	5	10,6	10	6	17	10	M6	10	M4	5	M5	10	-	-	M5	4	5,8	5,5
				6									M6	17	-	-		
5,2	5	9,9	10	8,5	18,7	8,2	M8	41	M6	17	M6	17	-	-	M6	8	6,8	6,7
				10									M6	17	-	-		
6	6	13,8	12	12	23,5	11	M10	41	M8	41	M8	41	-	-	M8	12	9	8,6
6,8	6,5	16,3	13	13	27	14,5	M10	41	M8	41	M8	41	M8	41	-	-	9	8,6

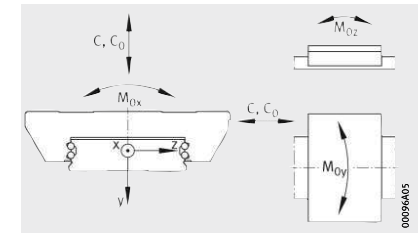


Four-row linear recirculating ball bearing and guideway assemblies

Full complement
Wide guideway
W and WL carriages



Lubrication connector on end face



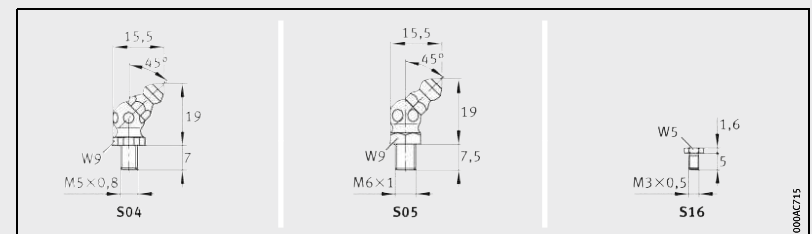
Load directions

Dimension table (continued) · Dimensions in mm

Designation	Carriage		Guideway	
	Designation	Mass m ≈ kg	Designation	Mass m ≈ kg/m
KUVE15-W	KWVE15-W	0,27	TKVD15-W	3,6
KUVE20-W	KWVE20-W	0,5	TKVD20-W	5
KUVE20-WL	KWVE20-WL	0,7		
KUVE25-W	KWVE25-W	1,1	TKVD25-W	9,4
KUVE25-WL	KWVE25-WL	1,46		
KUVE30-W	KWVE30-W	1,95	TKVD30-W	13,6
KUVE35-WL	KWVE35-WL	4,11	TKVD35-W	17,4

- 1) Calculation of basic load ratings in accordance with DIN ISO 14728-1. Based on practical experience, it may be possible to increase the basic dynamic load rating. The basic load rating can only be transmitted fully if the full thread length is used and the adjacent construction is dimensioned accordingly.
- 2) Maximum permissible screw depth for lubrication connectors.
- 3) Lubrication connectors are included loose:
 - S04 with KUVE20-W
 - S05 with KUVE25-W to KUVE35-WL
 - S16 with KUVE15-W.

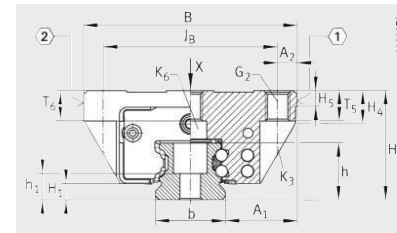
Lubrication connectors			Load carrying capacity					
A ₃	G ₃	2)	Basic load ratings ¹⁾		Moment ratings			
			dyn. C N	stat. C ₀ N	M _{0x} Nm	M _{0y} Nm	M _{0z} Nm	
3,6	M3	4	7 200	14 500	332	100	100	
5	M6	5	13 100	27 000	687	240	240	
			16 200	36 500	920	400	400	
10	M6	6	17 900	37 000	1 470	395	395	
			23 400	54 000	2 225	825	825	
11,25	M6	6	27 500	55 000	2 660	700	700	
14,3	M6	6	47 500	100 000	5 550	1 890	1 890	



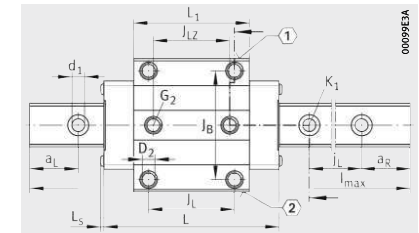
Lubrication connectors³⁾

Four-row linear recirculating ball bearing and guideway assemblies

Full complement
HIGH SPEED
HS, E-HS and N-HS carriages



KUVE25-B-HS, KUVE25-B-E-HS, KUVE25-B-N-HS



KUVE25-B-HS, KUVE25-B-E-HS, KUVE25-B-N-HS
View X rotated 90°

Dimension table - Dimensions in mm															
Designation	Dimensions				Mounting dimensions										
	$l_{max}^{2)}$	H	B	L	A ₁	J _B	b	A ₂	L ₁	L _s	J _L	J _{LZ}	J _L	a _L , a _R ³⁾	
														min. max.	
KUVE25-B-HS	5 880	36	70	98,3	23,5	57	23 ^{-0,005 -0,03}	6,5	60,7	1,65	45	40	60	20	53
KUVE25-B-E-HS	5 880	33	73	98,3	25	60	23	6,5	60,7	1,65	35 ⁴⁾	40	60	20	53
KUVE25-B-N-HS	5 880	31	70	98,3	23,5	57	23	6,5	60,7	1,65	45	40	60	20	53

For further table values, see page 346 and page 347.

① Locating face. ② Marking.

¹⁾ The stated torques represent maximum values for the secure transmission of forces in vibration-free, quasistatic applications ($S_0 = 1$). We recommend that the tightening torques for the screw connection of the adjacent construction should be determined at the customer under the conditions specific to the application and operation, observing the information in VDI Guideline 2230 Part 1 (2015) and the information in this description, see page 69 and page 26.

²⁾ Maximum length of single-piece guideways.
Permissible number of guideway segments, see page 309.

³⁾ a_L and a_R are dependent on the guideway length.

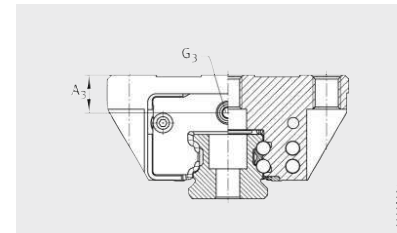
⁴⁾ The central holes are not present in the case of KUVE25-B-E-HS. The outer holes do not have the thread G₂.

											Fixing screws ¹⁾						d ₁	D ₂
H ₁	H ₄	H ₅	T ₅	T ₆	h	h ₁	G ₂		K ₁		K ₃		K ₆		D ₂			
							DIN ISO 4762-12.9				DIN 7984-8.8							
							M _A	M _A	M _A	M _A	M _A	M _A	M _A	M _A				
5,1	10,9	5	10	10	18,7	8,7	M8	24	M6	17	M6	17	M6	17	-	6,8	6,7	
5,1	7,85	5,25	10	10	18,7	8,7	M8	24	M6	17	M6	17	M6	17	-	6,8	-	
5,1	9,3	5	10	8	18,7	8,7	M8	24	M6	17	M6	17	-	-	M6	8	6,8	6,7

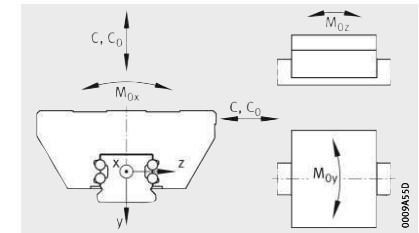


Four-row linear recirculating ball bearing and guideway assemblies

Full complement
HIGH SPEED
HS, E-HS and N-HS carriages



Lubrication connector on end face

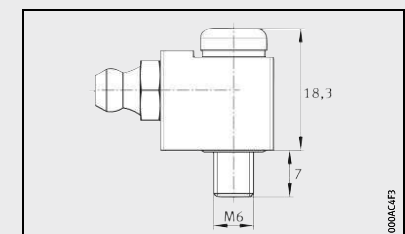
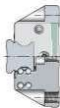


Load directions

Dimension table (continued) · Dimensions in mm							
Designation	Carriage		Guideway		Lubrication connectors		
	Designation	Mass m ≈ kg	Designation	Mass m ≈ kg/m	A ₃	G ₃ ²⁾	
KUVE25-B-HS	KWVE25-B-HS	0,71	TKVD25	2,7	11	M6	7
KUVE25-B-E-HS	KWVE25-B-E-HS	0,68	TKVD25	2,7	8	M6	7
KUVE25-B-N-HS	KWVE25-B-N-HS	0,57	TKVD25	2,7	6	M6	7

- 1) Calculation of basic load ratings in accordance with DIN ISO 14728-1.
Based on practical experience, it may be possible to increase the basic dynamic load rating.
The basic load rating can only be transmitted fully if the whole thread length is used
and the adjacent construction is dimensioned appropriately.
- 2) Maximum permissible screw depth for lubrication connectors.
- 3) Lubrication connector S62 is included loose.

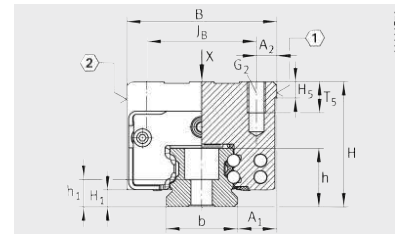
Load carrying capacity				
Basic load ratings ¹⁾		Moment ratings		
dyn. C N	stat. C ₀ N	M _{0x} Nm	M _{0y} Nm	M _{0z} Nm
15 000	37 000	510	395	395
15 000	37 000	510	395	395
15 000	37 000	510	395	395



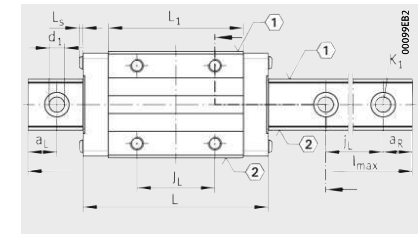
Lubrication connector S62³⁾

Four-row linear recirculating ball bearing and guideway assemblies

Full complement
HIGH SPEED
ES-HS, H-HS, S-HS and SN-HS carriages



KUVE25-B-ES-HS, KUVE25-B-H-HS, KUVE25-B-S-HS, KUVE25-B-SN-HS



KUVE25-B-ES-HS, KUVE25-B-H-HS, KUVE25-B-S-HS, KUVE25-B-SN-HS
View X rotated 90°

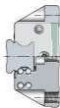
Dimension table - Dimensions in mm											
Designation	Dimensions				Mounting dimensions						
	$l_{max}^{2)}$	H	B	L	A_1	J_B	b	A_2	L_1	L_s	
KUVE25-B-ES-HS	5 880	33	48	98,3	12,5	35	23	6,5	60,7	1,65	
KUVE25-B-H-HS	5 880	40	48	98,3	12,5	35	23	6,5	60,7	1,65	
KUVE25-B-S-HS	5 880	36	48	98,3	12,5	35	23	6,5	60,7	1,65	
KUVE25-B-SN-HS	5 880	31	48	98,3	12,5	35	23	6,5	60,7	1,65	

For further table values, see page 350 and page 351.

① Locating face. ② Marking.

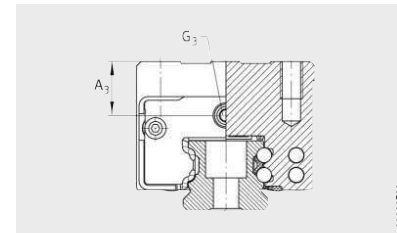
- The stated torques represent maximum values for the secure transmission of forces in vibration-free, quasistatic applications ($S_0 = 1$). We recommend that the tightening torques for the screw connection of the adjacent construction should be determined at the customer under the conditions specific to the application and operation, observing the information in VDI Guideline 2230 Part 1 (2015) and the information in this description, see page 69 and page 26.
- Maximum length of single-piece guideways.
Permissible number of guideway segments, see page 309.
Maximum single-piece guideway length of 6 m available by agreement.
- a_L and a_R are dependent on the guideway length.

J_L	J_L	$a_L, a_R^{3)}$		H_1	H_5	T_5	h	h_1	Fixing screws ¹⁾				
									G ₂		K ₁		d ₁
		DIN ISO 4762-12.9											
		min.	max.						M_A	M_A			
									Nm	Nm			
35	60	20	53	5,2	5,25	10	18,7	8,2	M6	17	M6	17	6,8
35	60	20	53	5,1	5	10	18,7	8,7	M6	10	M6	17	6,8
35	60	20	53	5,1	5	10	18,7	8,7	M6	10	M6	17	6,8
35	60	20	53	5,1	5	7,5	18,7	8,7	M6	10	M6	17	6,8

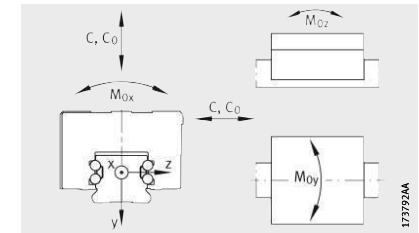


Four-row linear recirculating ball bearing and guideway assemblies

Full complement
HIGH SPEED
ES-HS, H-HS, S-HS and SN-HS carriages



Lubrication connector on end face



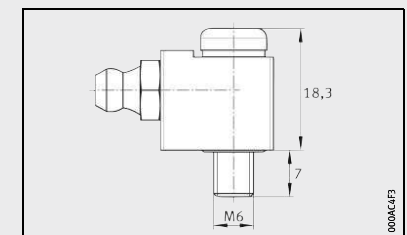
Load directions

Dimension table (continued) · Dimensions in mm

Designation	Carriage		Guideway		Lubrication connectors		
	Designation	Mass m ≈ kg	Designation	Mass m ≈ kg/m	A ₃	G ₃	²⁾
KUVE25-B-ES-HS	KWVE25-B-ES-HS	0,56	TKVD25	2,7	11	M6	7
KUVE25-B-H-HS	KWVE25-B-H-HS	0,65	TKVD25	2,7	15	M6	7
KUVE25-B-S-HS	KWVE25-B-S-HS	0,56	TKVD25	2,7	11	M6	7
KUVE25-B-SN-HS	KWVE25-B-SN-HS	0,45	TKVD25	2,7	6	M6	7

- ¹⁾ Calculation of basic load ratings in accordance with DIN ISO 14728-1.
Based on practical experience, it may be possible to increase the basic dynamic load rating.
The basic load rating can only be transmitted fully if the whole thread length is used
and the adjacent construction is dimensioned appropriately.
- ²⁾ Maximum permissible screw depth for lubrication connectors.
- ³⁾ Lubrication connector S62 is included loose.

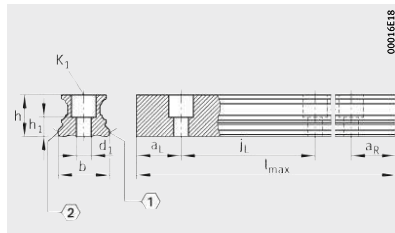
Load carrying capacity				
Basic load ratings ¹⁾		Moment ratings		
dyn. C N	stat. C ₀ N	M _{0x} Nm	M _{0y} Nm	M _{0z} Nm
15 000	37 000	510	395	395
15 000	37 000	510	395	395
15 000	37 000	510	395	395
15 000	37 000	510	395	395



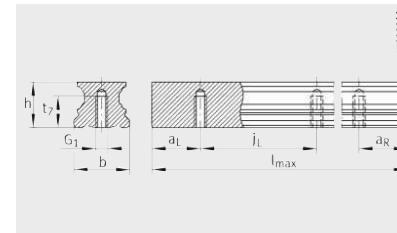
Lubrication connector S62³⁾

Four-row linear recirculating ball bearing and guideway assemblies

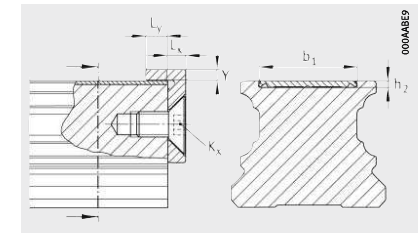
Guideways and closing methods for KUV...-B
KUV...-W



TKVD



TKVD..-U



Retaining plate and covering strip

Dimension table - Dimensions in mm

Designation	For linear guidance system	Mass m ≈ kg/m	Closing plug ¹⁾				Covering strip ²⁾		
			Plastic		Brass		Adhesive bonded	Clip fit Convex	Retaining plate
			one-piece	two-piece ⁶⁾	one-piece	two-piece			
TKVD15-B	KUVE15-B	1,44	KA07-A-TN	KA07-A-TN/A	-	KA07-M/A	-	-	-
TKVD15-B-U	KUVE15-B	1,44	-	-	-	-	-	-	-
TKVD15-W	KUVE15-W	3,6	KA08-TN	KA08-TN/A	-	-	-	-	-
TKVD15-W-U	KUVE15-W	3,6	-	-	-	-	-	-	-
TKVD20	KUVE20-B	2,2	KA10-TN	KA10-TN/A	KA10-M	KA10-M/A	-	-	-
TKVD20-U			-	-	-	-	-	-	-
TKVD20-ADB			-	-	-	-	ADB13	-	HPL.ADB9-B
TKVD20-ADK			-	-	-	-	-	ADK12	-
TKVD20-W	KUVE20-W	5	KA08-TN	KA08-TN/A	-	-	-	-	
TKVD20-W-U			-	-	-	-	-	-	

① Locating face. ② Marking.

¹⁾ Closing plugs, see page 401.

²⁾ Covering strips, see page 402.

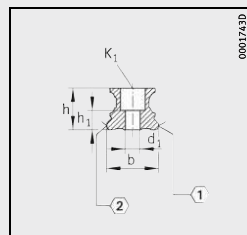
³⁾ The stated torques represent maximum values for the secure transmission of forces in vibration-free, quasistatic applications ($S_0 = 1$). We recommend that the tightening torques for the screw connection of the adjacent construction should be determined at the customer under the conditions specific to the application and operation, observing the information in VDI Guideline 2230 Part 1 (2015) and the information in this description, see page 69 and page 26.

⁴⁾ Maximum length of single-piece guideways.
Longer guideways are supplied as several segments and are marked accordingly.
Permissible number of guideway segments, see page 309.

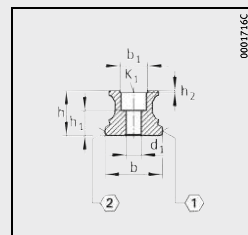
⁵⁾ a_L and a_R are dependent on the guideway length.

⁶⁾ Standard.

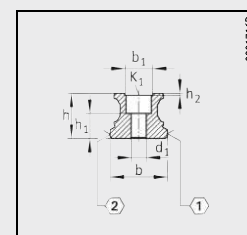
Dimensions														Fixing screws ³⁾						
K_x	L_x	L_y	Y	$l_{max}^4)$	h	b	$a_L, a_R^5)$		j_L	j_B	a_5	h_1	h_2	t_7	b_1	G_1	K_1		d_1	
							min.	max.				±0,5				DIN ISO 4762-12.9				
																	M_A	M_A		
-	-	-	-	2880	15	15	20	53	60	-	-	7,7	-	-	8	-	M5	M4	5	4,6
-	-	-	-	2890	12,9	37	10	44	50	22	7,5	6	-	-	7	-	M5	M4	5	4,6
-	-	-	-	5880	17	20	20	53	60	-	-	8,6	-	-	10	-	M6	M5	10	5,8
M5	4	5	2	5880	17	20	20	53	60	-	-	8,6	0,5	-	13	-	M5	M5	10	5,8
-	-	-	-	2880	17	42	20	53	60	24	9	10	1,1	-	12,6	-	M6	M4	5	5,8
-	-	-	-														M6	-	-	-



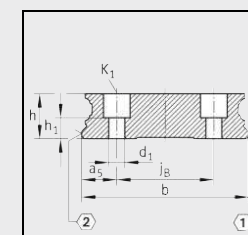
TKVD



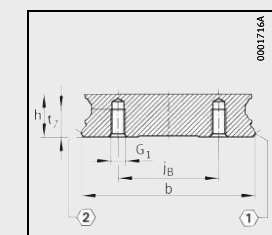
TKVD..-ADB



TKVD..-ADK



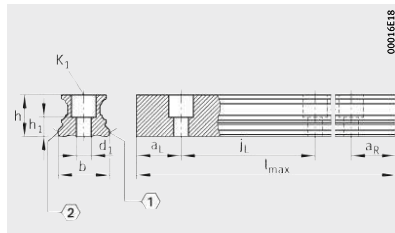
TKVD..-W



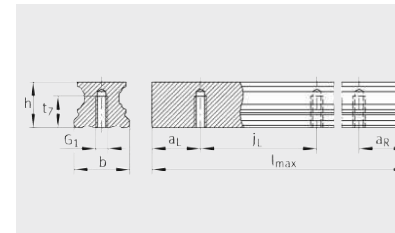
TKVD..-W-U

Four-row linear recirculating ball bearing and guideway assemblies

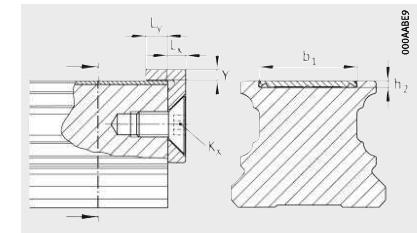
Guideways and closing methods for KUVE...-B
KUVE...-W



TKVD



TKVD..-U



Retaining plate and covering strip

Dimension table (continued) - Dimensions in mm									
Designation	For linear guidance system	Mass m ≈ kg/m	Closing plug ¹⁾				Covering strip ²⁾		
			Plastic		Brass		Adhesive bonded	Clip fit Convex	Retaining plate
			one-piece	two-piece ⁶⁾	one-piece	two-piece			
TKVD25	KUVE25-B	2,7	KA11-TN	KA11-TN/A	KA11-M	KA11-M/A	-	-	-
TKVD25-U			-	-	-	-	-	-	-
TKVD25-ADB		2,7	-	-	-	-	ADB13	-	HPL.ADB9-B
TKVD25-ADK			-	-	-	-	-	ADK12	-
TKVD25-W	KUVE25-W	9,4	KA11-TN	KA11-TN/A	-	-	-	-	-
TKVD25-W-U			-	-	-	-	-	-	-

① Locating face. ② Marking.

1) Closing plugs, see page 401.

2) Covering strips, see page 402.

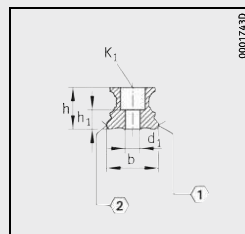
3) The stated torques represent maximum values for the secure transmission of forces in vibration-free, quasistatic applications ($S_0 = 1$). We recommend that the tightening torques for the screw connection of the adjacent construction should be determined at the customer under the conditions specific to the application and operation, observing the information in VDI Guideline 2230 Part 1 (2015) and the information in this description, see page 69 and page 26.

4) Maximum length of single-piece guideways.
Longer guideways are supplied as several segments and are marked accordingly.
Permissible number of guideway segments, see page 309.

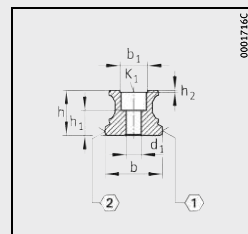
5) a_L and a_R are dependent on the guideway length.

6) Standard.

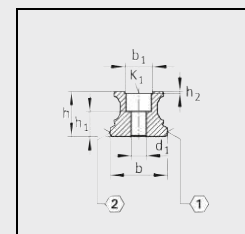
Dimensions														Fixing screws ³⁾					
K_x	L_x	L_y	Y	$l_{max}^4)$	h	b	$a_L, a_R^5)$		j_L	j_B	a_5	h_1	h_2	t_7	b_1	G_1	K_1	d_1	
							$-0,005$ $-0,035$	min.	max.			$\pm 0,5$				DIN ISO 4762-12.9			
																M_A	M_A		
																Nm	Nm		
-	-	-	-	5880	18,7	23		20	53	60	-	8,2	-	-	12	-	M6	17	6,8
M5	4	5	2	5880	18,7	23		20	53	60	-	8,2	0,5 1,1	-	13 12,6	-	M6	17	6,8
-	-	-	-	5860	18,7	69		20	71	80	40	14,5	8,2	-	-	-	M6	17	6,8



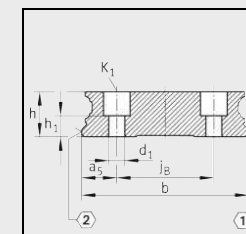
TKVD



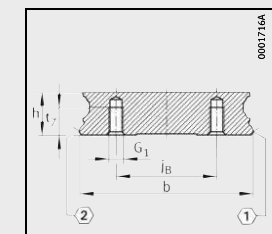
TKVD..-ADB



TKVD..-ADK



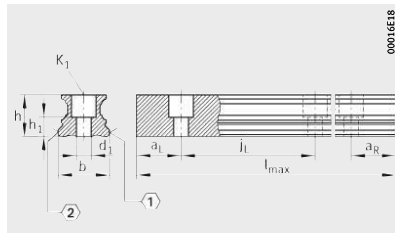
TKVD..-W



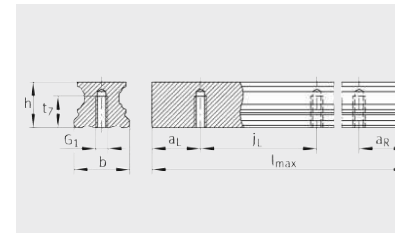
TKVD..-W-U

Four-row linear recirculating ball bearing and guideway assemblies

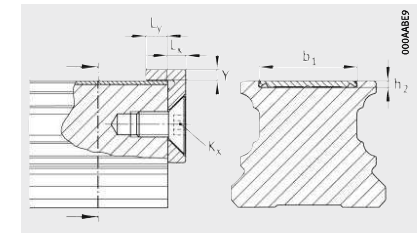
Guideways and closing methods for KUV...-B
KUV...-W



TKVD



TKVD..-U



Retaining plate and covering strip

Dimension table (continued) · Dimensions in mm

Designation	For linear guidance system	Mass m ≈ kg/m	Closing plug ¹⁾				Covering strip ²⁾		
			Plastic		Brass		Adhesive bonded	Clip fit Convex	Retaining plate
			one-piece	two-piece ⁶⁾	one-piece	two-piece			
TKVD30	KUV30-B	4,3	KA15-TN	KA15-TN/A	KA15-M	KA15-M/A	-	-	-
TKVD30-U			-	-	-	-	-	-	-
TKVD30-ADB			-	-	-	-	ADB18	-	HPL.ADB17-B
TKVD30-ADK			-	-	-	-	ADK16	-	
TKVD30-W	KUV30-W	13,6	KA15TN	KA15TN/A	-	-	-	-	
TKVD30-W-U			-	-	-	-	-	-	

① Locating face. ② Marking.

¹⁾ Closing plugs, see page 401.

²⁾ Covering strips, see page 402.

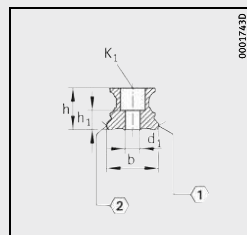
³⁾ The stated torques represent maximum values for the secure transmission of forces in vibration-free, quasistatic applications ($S_0 = 1$). We recommend that the tightening torques for the screw connection of the adjacent construction should be determined at the customer under the conditions specific to the application and operation, observing the information in VDI Guideline 2230 Part 1 (2015) and the information in this description, see page 69 and page 26.

⁴⁾ Maximum length of single-piece guideways.
Longer guideways are supplied as several segments and are marked accordingly.
Permissible number of guideway segments, see page 309.

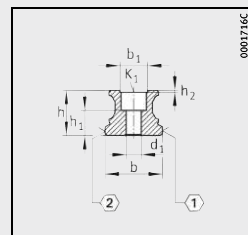
⁵⁾ a_L and a_R are dependent on the guideway length.

⁶⁾ Standard.

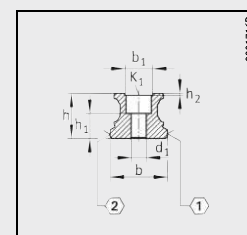
Dimensions															Fixing screws ³⁾			
K_x	L_x	L_y	Y	$l_{max}^{4)}$	h	b	$a_L, a_R^{5)}$		j_L	j_B	a_5	h_1	h_2	t_7	b_1	G_1	K_1	d_1
							$-0,005$ $-0,035$	min.	min.			$\pm 0,5$				DIN ISO 4762-12,9		
																M_A	M_A	
																Nm	Nm	
-	-	-	-	5860	23,5	28		20	71	80	-	11	-	-	15	M8	41	8
M6	4	5	3	5860	23,5	28		20	71	80	-	11	0,5	-	18	-	-	8
													1,1	-	16,6	-	-	8
-	-	-	-	5860	23,5	80		20	71	80	50	15	11	-	-	M8	41	9
																-	-	-



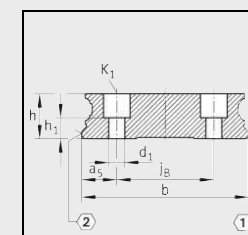
TKVD



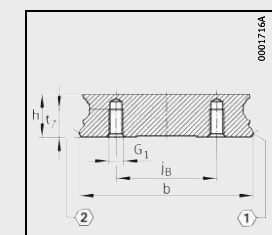
TKVD..-ADB



TKVD..-ADK



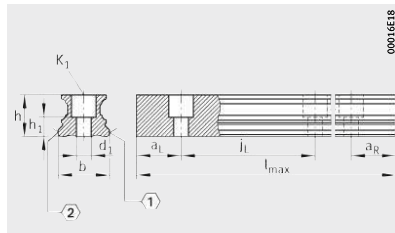
TKVD..-W



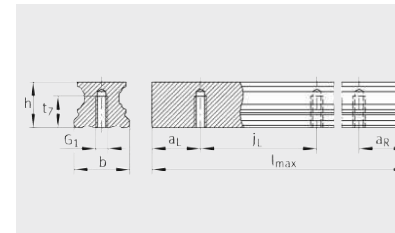
TKVD..-W-U

Four-row linear recirculating ball bearing and guideway assemblies

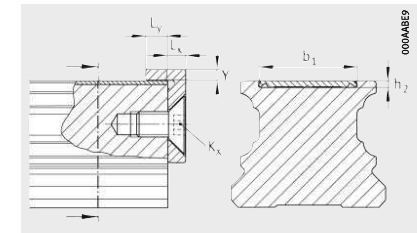
Guideways and closing methods for KUV...-B
KUV...-W



TKVD



TKVD..-U



Retaining plate and covering strip

Dimension table (continued) · Dimensions in mm									
Designation	For linear guidance system	Mass m ≈ kg/m	Closing plug ¹⁾				Covering strip ²⁾		
			Plastic		Brass		Adhesive bonded	Clip fit Convex	Retaining plate
			one-piece	two-piece ⁶⁾	one-piece	two-piece			
TKVD35	KUV35-B	5,7	KA15-TN	KA15-TN/A	KA15-M	KA15-M/A	-	-	-
TKVD35-U			-	-	-	-	-	-	-
TKVD35-ADB		5,7	-	-	-	-	ADB18	-	HPL.ADB17-B
TKVD35-ADK			-	-	-	-	-	ADK16	-
TKVD35-W	KUV35-W	17,4	KA15-TN	KA15-TN/A	-	-	-	-	-
TKVD35-W-U			-	-	-	-	-	-	-

① Locating face. ② Marking.

1) Closing plugs, see page 401.

2) Covering strips, see page 402.

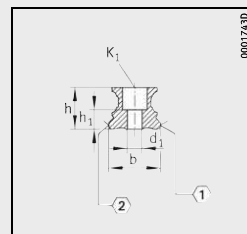
3) The stated torques represent maximum values for the secure transmission of forces in vibration-free, quasistatic applications ($S_0 = 1$). We recommend that the tightening torques for the screw connection of the adjacent construction should be determined at the customer under the conditions specific to the application and operation, observing the information in VDI Guideline 2230 Part 1 (2015) and the information in this description, see page 69 and page 26.

4) Maximum length of single-piece guideways.
Longer guideways are supplied as several segments and are marked accordingly.
Permissible number of guideway segments, see page 309.

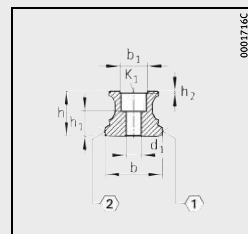
5) a_L and a_R are dependent on the guideway length.

6) Standard.

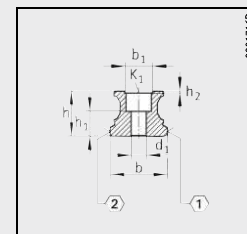
Dimensions															Fixing screws ³⁾			
K_x	L_x	L_y	Y	$l_{max}^{4)}$	h	b	$a_L, a_R^{5)}$	j_L	j_B	a_5	h_1	h_2	t_7	b_1	G_1	K_1	d_1	
							$-0,005$ $-0,035$	min.	max.		$\pm 0,5$				DIN ISO 4762-12,9			
															M_A	M_A		
															Nm	Nm		
-	-	-	-	5 860	27	34	20	71	80	-	14,5	-	-	15	M8	41	9	
M6	4	5	3	5 860	27	34	20	71	80	-	14,5	0,5	-	18	M5	10	9	
-	-	-	-	5 860	27	90	20	71	80	60	15	-	-	15	M8	41	9	



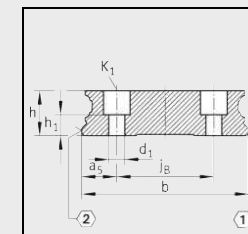
TKVD



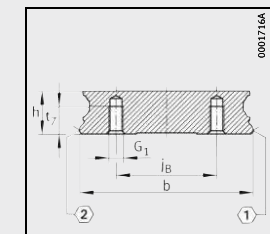
TKVD..-ADB



TKVD..-ADK



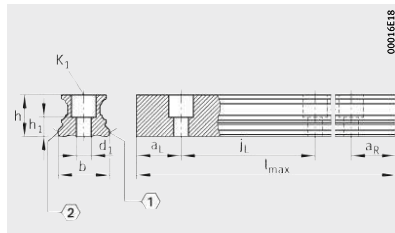
TKVD..-W



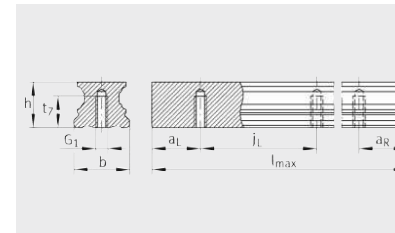
TKVD..-W-U

Four-row linear recirculating ball bearing and guideway assemblies

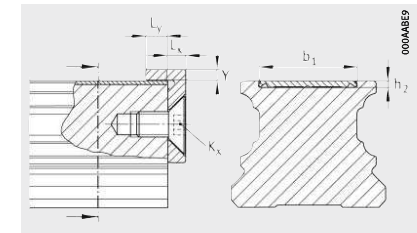
Guideways and closing methods for KUVE...-B



TKVD



TKVD..-U



Retaining plate and covering strip

Dimension table (continued) · Dimensions in mm

Designation	For linear guidance system	Mass m ≈ kg/m	Closing plug ¹⁾				Covering strip ²⁾		
			Plastic		Brass		Adhesive bonded	Clip fit Convex	Retaining plate
			one-piece	two-piece ⁶⁾	one-piece	two-piece			
TKVD45	KUVE45-B	9,2	KA20-TN	KA20-TN/A	KA20-M	KA20-M/A	-	-	-
TKVD45-U			-	-	-	-	-	-	-
TKVD45-ADB		9,2	-	-	-	-	ADB23	-	HPL.ADB17-B
TKVD45-ADK			-	-	-	-	-	ADK21	-
TKVD55-B	KUVE55-B	14	KA24-TN	KA24-TN/A	KA24-M	KA24-M/A	-	-	-
TKVD55-B-U			-	-	-	-	-	-	-
TKVD55-ADB		14	-	-	-	-	ADB27	-	HPL.ADB17-B
TKVD55-ADK			-	-	-	-	-	ADK25	-

① Locating face. ② Marking.

¹⁾ Closing plugs, see page 401.

²⁾ Covering strips, see page 402.

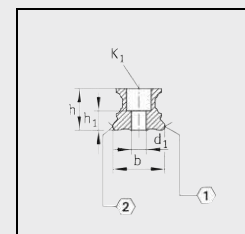
³⁾ The stated torques represent maximum values for the secure transmission of forces in vibration-free, quasistatic applications ($S_0 = 1$). We recommend that the tightening torques for the screw connection of the adjacent construction should be determined at the customer under the conditions specific to the application and operation, observing the information in VDI Guideline 2230 Part 1 (2015) and the information in this description, see page 69 and page 26.

⁴⁾ Maximum length of single-piece guideways.
Longer guideways are supplied as several segments and are marked accordingly.
Permissible number of guideway segments, see page 309.

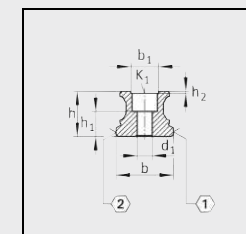
⁵⁾ a_L and a_R are dependent on the guideway length.

⁶⁾ Standard.

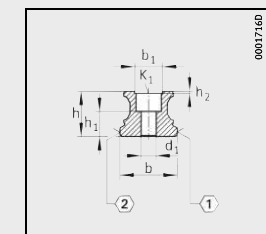
Dimensions															Fixing screws ³⁾					
K_x	L_x	L_y	Y	$l_{max}^4)$	h	b	$a_L, a_R^5)$		j_L	j_B	a_5	h_1	h_2	t_7	b_1	G_1	K_1		d_1	
							min.	max.				±0,5					M_A	M_A		
-	-	-	-	5 835	34,2	45	20	94	105	-	-	15,7	-	-	20	-	M12	140	140	13,4
M5	4	5	2	5 835	34,2	45	20	94	105	-	-	15,7	0,5 1,1	-	23 21,7	-	M12	140	140	13,4
-	-	-	-	5 820	41,5	53	20	107	120	-	-	19	-	-	22	-	M14	220	220	15,4
M5	4	5	2	5 820	41,5	53	20	107	120	-	-	19	0,5 1,1	-	27 25,7	-	M14	220	220	15,4



TKVD



TKVD..-ADB



TKVD..-ADK