

GLIDE-ALWAYSSE UNITS & FIXING SOCKETS

This is a simple and inexpensive range of ball transfer units which have a large ball exposure. They are ideal for lighter duties and where there is a cost consideration.

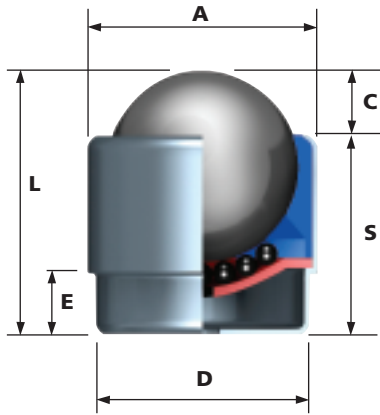
All units are fitted with a seal which simply and effectively removes debris by an internal plastic scraper.

The direction of rotation slightly moves the ball against the seal providing a highly effective cleaning action.

For normal applications steel bearings with zinc plated pressings and components are recommended. However, when used as a castor or in wet conditions stainless steel (Type 15) is recommended.

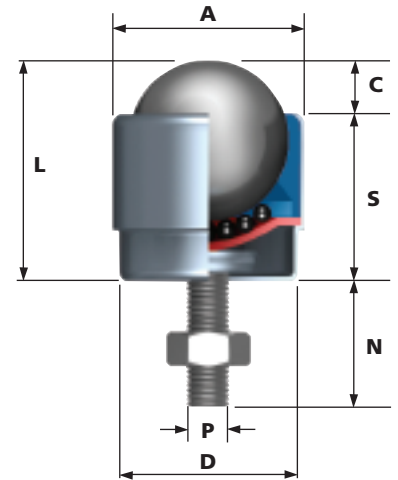
1700 PLUG FIXING

Features: Plain body, dirt exit hole standard.



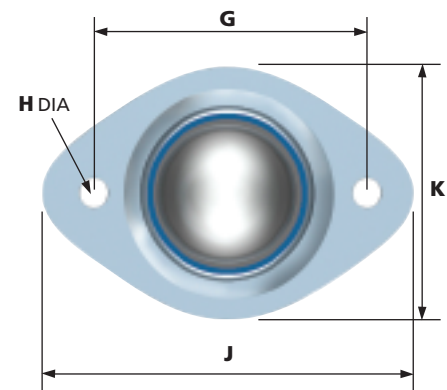
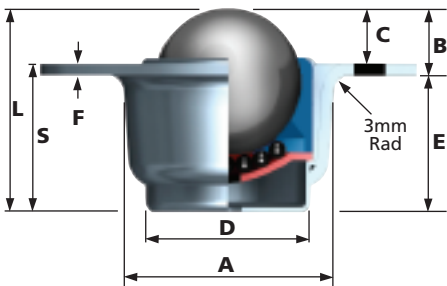
1701 BOLT FIXING

Features: Drill hole nut and bolt fixing. Maximum tightening torque is 15Nm.



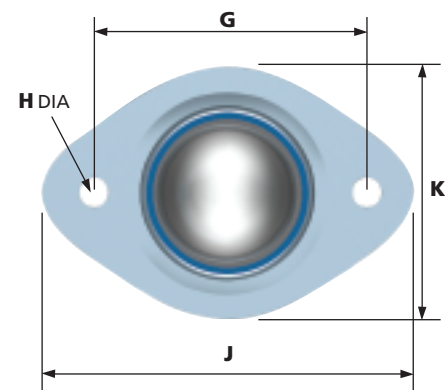
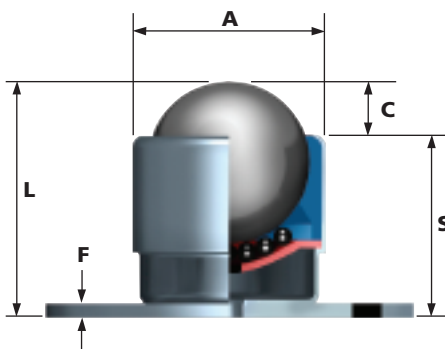
1702 FLANGE FIXING

Features: Low profile flange fixing, dirt exit hole standard. Seating hole diameter 39mm.



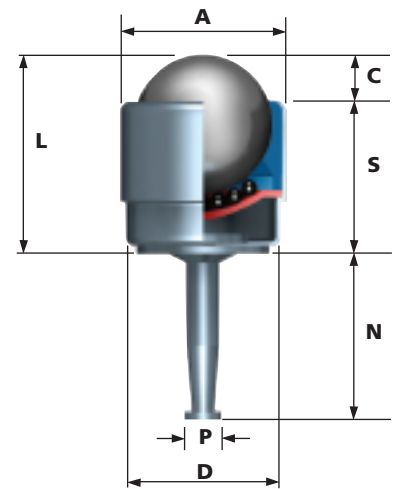
1703 PLATE FIXING

Features: High profile base plate fixing. Drill hole fixing. Dirt exit hole standard.



1709 GRIP NECK FIXING

Features: Plastic or steel socket fixing.



1705 GRIP NECK



FIXING SOCKET FOR GLIDE-ALWAYSSE 1709

TOOTHED STEEL SOCKET WITH 19mm HEAD DIAMETER
For 9.5mm x 35mm drilled hole.

APPLICATION: WOOD

Other tube fixing sockets are available on request

