

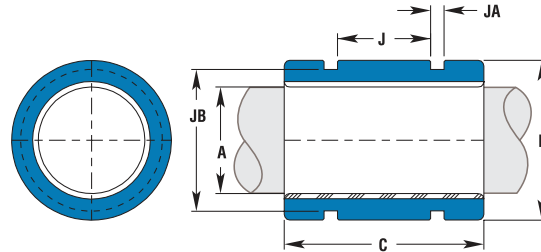
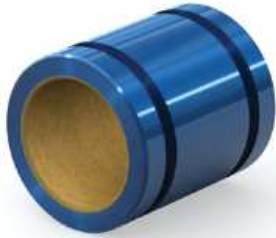


Thin Wall Bearings **Simplicity®**

COMPACT THIN WALL BEARINGS – FMT



Download CAD



DIMENSIONAL INFORMATION

PRECISION I.D. SERIES SIMILAR TO PRELOADED BALL BEARING				COMPENSATED I.D. SERIES SIMILAR TO STANDARD BALL BEARING			B O.D. h7		C LENGTH h13		CONCENTRIC	BEARING WEIGHT
PART NO.	NOMINAL SIZE	A BEARING I.D. F8		PART NO.	A BEARING I.D.							
CLOSED	MM	MIN.	MAX.	CLOSED	MIN.	MAX.	MIN.	MAX.	MIN.	MAX.	MAX. MM	KG.
FMT 06	6	6.010	6.028	FMTC 06	6.060	6.078	11.982	12	21.746	22	0.0254	0.0057
FMT 08	8	8.013	8.035	FMTC 08	8.063	8.085	14.982	15	23.746	24	0.0254	0.0071
FMT 10	10	10.013	10.035	FMTC 10	10.063	10.085	16.982	17	25.746	26	0.0254	0.0085
FMT 12	12	12.016	12.043	FMTC 12	12.066	12.093	18.979	19	27.746	28	0.0254	0.0113
FMT 14	14	14.016	14.043	FMTC 14	14.066	14.093	20.979	21	27.746	28	0.0254	0.0128
FMT 16	16	16.016	16.043	FMTC 16	16.066	16.093	23.979	24	29.746	30	0.0254	0.0184
FMT 20	20	20.020	20.053	FMTC 20	20.096	20.129	27.979	28	29.746	30	0.0254	0.0227
FMT 25	25	25.020	25.053	FMTC 25	25.096	25.129	34.975	35	39.746	40	0.0254	0.0439
FMT 30	30	30.020	30.053	FMTC 30	30.096	30.129	39.975	40	49.746	50	0.0254	0.0652
FMT 40	40	40.025	40.064	FMTC 40	40.127	40.166	51.970	52	59.746	60	0.0254	0.1233
FMT 50	50	50.025	50.064	FMTC 50	50.127	50.166	61.970	62	69.746	70	0.0254	0.1772

MOUNTING DIMENSIONS

PART NO.		NOMINAL SIZE	J	JA	JB	O-RING SIZE	O-RING PART NUMBER
PRECISION	COMPENSATED		BETWEEN O-RING GRVS.	O-RING GRV. WIDTH	O-RING GRV. DIA.		
FMT 06	FMTC 06	6	N/A	N/A	N/A	N/A	N/A
FMT 08	FMTC 08	8	10.0	2.000	12.200	12 x 1.7	6000025
FMT 10	FMTC 10	10	12.0	2.000	14.400	14 x 1.6	6000026
FMT 12	FMTC 12	12	14.0	2.000	16.600	16 x 1.5	6000027
FMT 14	FMTC 14	14	14.0	2.000	18.500	18 x 1.5	6000028
FMT 16	FMTC 16	16	14.0	2.000	21.300	21.1 x 1.6	6000030
FMT 20	FMTC 20	20	14.0	2.000	25.500	25 x 1.5	6000032
FMT 25	FMTC 25	25	22.0	3.200	30.900	30.5 x 2.5	6000033
FMT 30	FMTC 30	30	30.0	3.200	35.900	35.5 x 2.5	6000019
FMT 40	FMTC 40	40	40.0	4.100	46.200	46 x 3.5	6000035
FMT 50	FMTC 50	50	50.0	4.100	56.300	26 x 3.5	6000021

LOAD & SPEED DATA

PART NO.	EFFECTIVE SURFACE AREA	MAX. STATIC LOAD LBS.		EFFECTIVE SURFACE AREA	MAX. STATIC LOAD N	
		FRELON			FRELON	
	CM ²	GOLD	J & W	CM ²	GOLD	J & W
FMT 06	0.202	613	307	1.3	2727	1364
FMT 08	0.295	891	445	1.9	3963	1982
FMT 10	0.403	1204	602	2.6	5356	2678
FMT 12	0.527	1556	778	3.4	6926	3463
FMT 14	0.605	1816	908	3.9	8083	4042
FMT 16	0.744	2222	1111	4.8	9888	4944
FMT 20	0.930	2778	1389	6.0	12361	6180
FMT 25	1.550	4629	2315	10.0	20601	10301
FMT 30	2.325	6944	3472	15.0	30902	15451
FMT 40	3.720	11111	5555	24.0	49442	24721
FMT 50	5.425	16203	8102	35.0	72104	36052

Note: MAX. PV (m/min. * kg/sq. cm)

Frelon Gold = 430 PV
Frelon J = 215 PV

MAX. Speed Running Dry (m/min.)
Frelon Gold = 91.4
Frelon J = 42.6

MAX. Speed Running with Lubrication (m/min.)
Frelon Gold = 251.5
Frelon J = 122

MAX. PV (m/s. * N/mm²)

Frelon Gold = 0.70 PV
Frelon J = 0.35 PV

MAX. Speed Running Dry (m/s)
Frelon Gold = 1.52
Frelon J = 0.71

MAX. Speed Running with Lubrication (m/s)
Frelon Gold = 4.19
Frelon J = 2.03



Plain Bearing Accessories: Retaining Rings, Seals, O-Rings—page 17



Only certified Simplicity 60 Plus Shafting provides maximum linear bearing performance.

Inch Series—page 40 Metric Series—page 72